



# M12 BS

SERVICE PARTS DIAGRAM

TTI Model Number: 018 057 011, 015, 016

M12™ CORDLESS BANDSAW

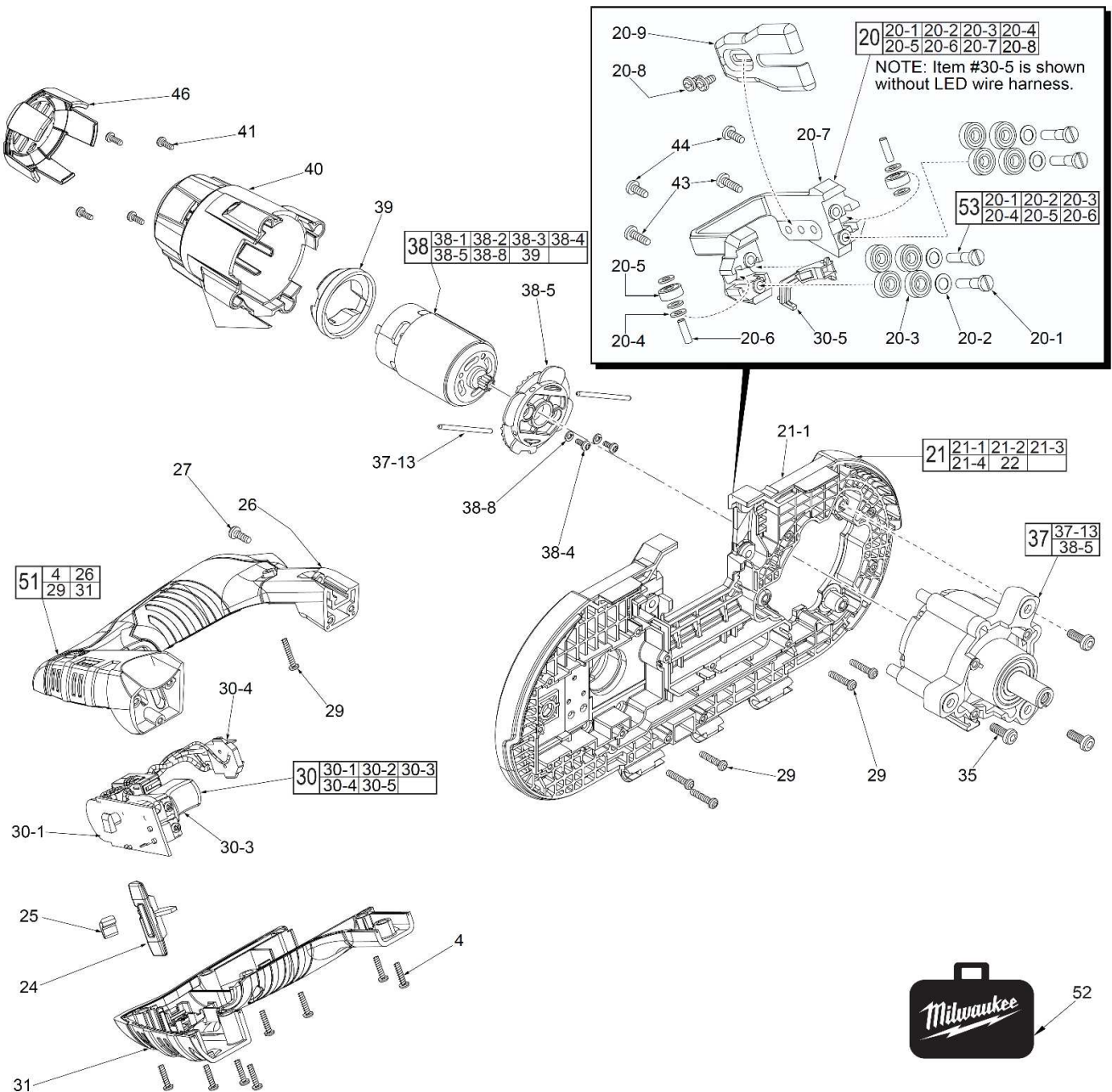
Bulletin Date:

**May-20**

Starting Serial Number:

VERSION A - C2014

**00** **0** **EXAMPLE:**  
Component Parts (Small #)  
Are Included When Ordering  
The Assembly (Large #).





# M12 BS

SERVICE PARTS DIAGRAM

TTI Model Number: 018 057 011, 015, 016

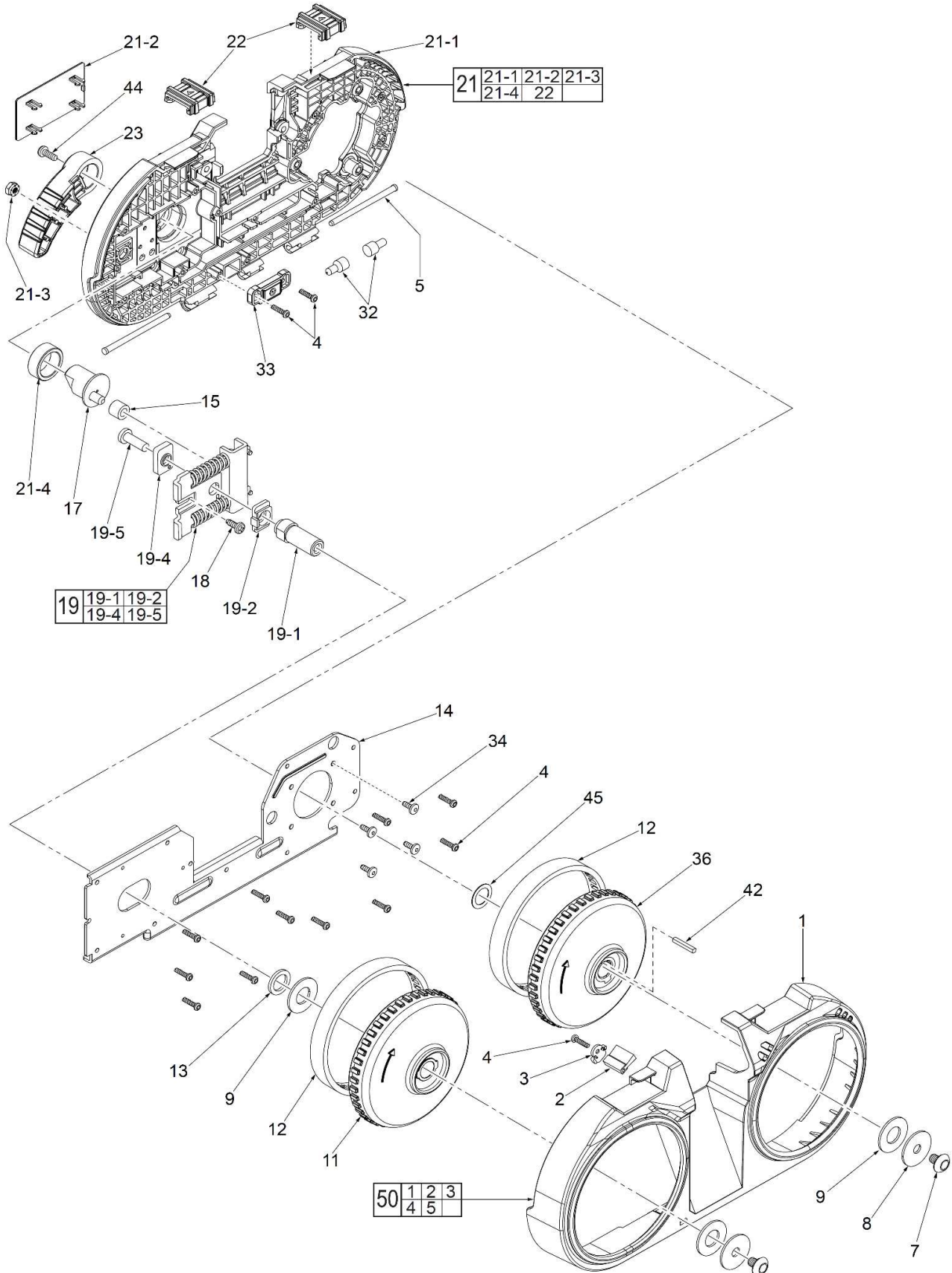
## M12™ CORDLESS BANDSAW

Bulletin Date:

**May-20**

Starting Serial Number:

VERSION A - C2014





# M12 BS

SERVICE PARTS LIST

TTI Model Number: 018 057 011, 015, 016

M12™ CORDLESS BANDSAW

Bulletin Date:

**May-20**

Starting Serial Number:

VERSION A - C2014

ITEM	PART NUMBER	PART DESCRIPTION	QTY (PCS)
1	304845001	BLADE COVER	1
2	902592001	TIRE CLEANER BRUSH	1
3	523503001	BRUSH COVER	1
4	660821002	4-20 X 1/2" SCREW	22
5	673069001	STEEL PIN	2
7	661299001	1/4" X 0.35" SCREW	2
8	633266001	STEEL WASHER	2
9	560189001	PLASTIC WASHER	3
11	519383001	FRONT PULLEY ASSEMBLY	1
12	560142001	PULLEY TIRE	2
13	633984001	FLAT WASHER	1
14	633722001	DECK COVER PLATE	1
15	692129001	BUSHING (NEW)	1
15	692502001	BUSHING (OLD)	1
17	306564001	BLADE RELEASE SHAFT ASSEMBLY	1
18	661692001	8-32 X 0.433" SCREW	1
19	201333004	BLADE TENSION BAR ASSEMBLY	1
19-1	621247001	FRONT PULLEY AXLE	1
19-2	611537002	ANGLE WASHER	1
19-4	611560001	BLOCK WASHER	1
19-5	661158003	1/4-20 X 3/4" SCREW	1
20	201341004	BLADE GUIDE ASSEMBLY	1
20-1	661170001	12-24 X .96" SCREW	4
20-2	632717001	WASHER	4
20-3	681431001	BALL BEARING	8
20-4	632716001	WASHER	5
20-5	681339001	BALL BEARING	2
20-6	672278001	STEEL PIN	2
20-7	641747001	BLADE GUIDE	1
20-8	660532001	8-32 X 5/16" SCREW	2
20-9	633732001	BUMPER	1
21	201344003	DECK ASSEMBLY	1
21-1	304844001	DECK	1
21-2	350817001	LOGO PLATE	1
21-3	660106008	HEX NUT	1
21-4	692305001	SLEEVE BEARING	1
22	522895001	LATCH	2
23	522894001	BLADE RELEASE LEVER	1
24	522893001	SHUTTLE	1
25	692342001	SHUTTLE SPRING	1



# M12 BS

SERVICE PARTS LIST

TTI Model Number: 018 057 011, 015, 016

M12™ CORDLESS BANDSAW

Bulletin Date:

**May-20**

Starting Serial Number:

VERSION A - C2014

ITEM	PART NUMBER	PART DESCRIPTION	QTY (PCS)
26	522760001	HANDLE SUPPORT	1
27	660198002	6-32 X 3/8" SCREW	1
29	660031017	M3.5 X 16MM SCREW	6
30	201370003	SWITCH ASSEMBLY	1
30-1	-	PCB ASSEMBLY	1
30-2	700027001	FIBER TUBE (NOT SHOWN, SEE WIRING PAGES)	0.1m
30-3	-	SWITCH	1
30-4	-	BATTERY CONTACT PLATE	1
30-5	-	HOLDER	1
31	-	HANDLE COVER	1
32	790009001	CONNECTOR	2
33	201385003	WEAR BLOCK ASSEMBLY	1
34	661105001	6-32 X 3/8" SCREW	4
35	661129004	8-16 X 1/2" SCREW	3
36	303210001	REAR PULLEY	1
37	202009001	GEAR BOX ASSEMBLY	1
37-13	673016001	PIN	2
38	230396001	MOTOR ASSEMBLY	1
38-1	770312166	RED MOTOR WIRE (NOT SHOWN, SEE WIRING)	1
38-2	770320012	WHITE MOTOR WIRE (NOT SHOWN, SEE WIRING)	1
38-3	700017001	FIBER TUBE (NOT SHOWN, SEE WIRING)	0.11m
38-4	660211006	M3 X 6MM SCREW	2
38-5	522750001	MOTOR MOUNT BRACKET	1
38-8	670028003	3MM LOCK WASHER	1
39	562848001	RUBBER MOTOR RING	1
40	522779001	MOTOR COVER	1
41	660230016	M3 X 10MM SCREW	4
42	672962001	FLAT KEY	1
43	661113001	8-32 X 0.5" SCREW	2
44	661003001	8-32 X .375" SCREW	3
45	634189001	FLAT WASHER	1
46	524204002	MOTOR HOUSING CAP	1
50	202010001	BLADE COVER ASSEMBLY	1
51	201332003	HANDLE ASSEMBLY	1
52	304996001	CARRYING CASE 018057011, 015 VERSION	1
53	201371001	GUIDE ROLLER KIT	1



# M12 BS

SERVICE INSTRUCTION

TTI Model Number: 018 057 011, 015, 016

## M12™ CORDLESS BANDSAW

Bulletin Date:

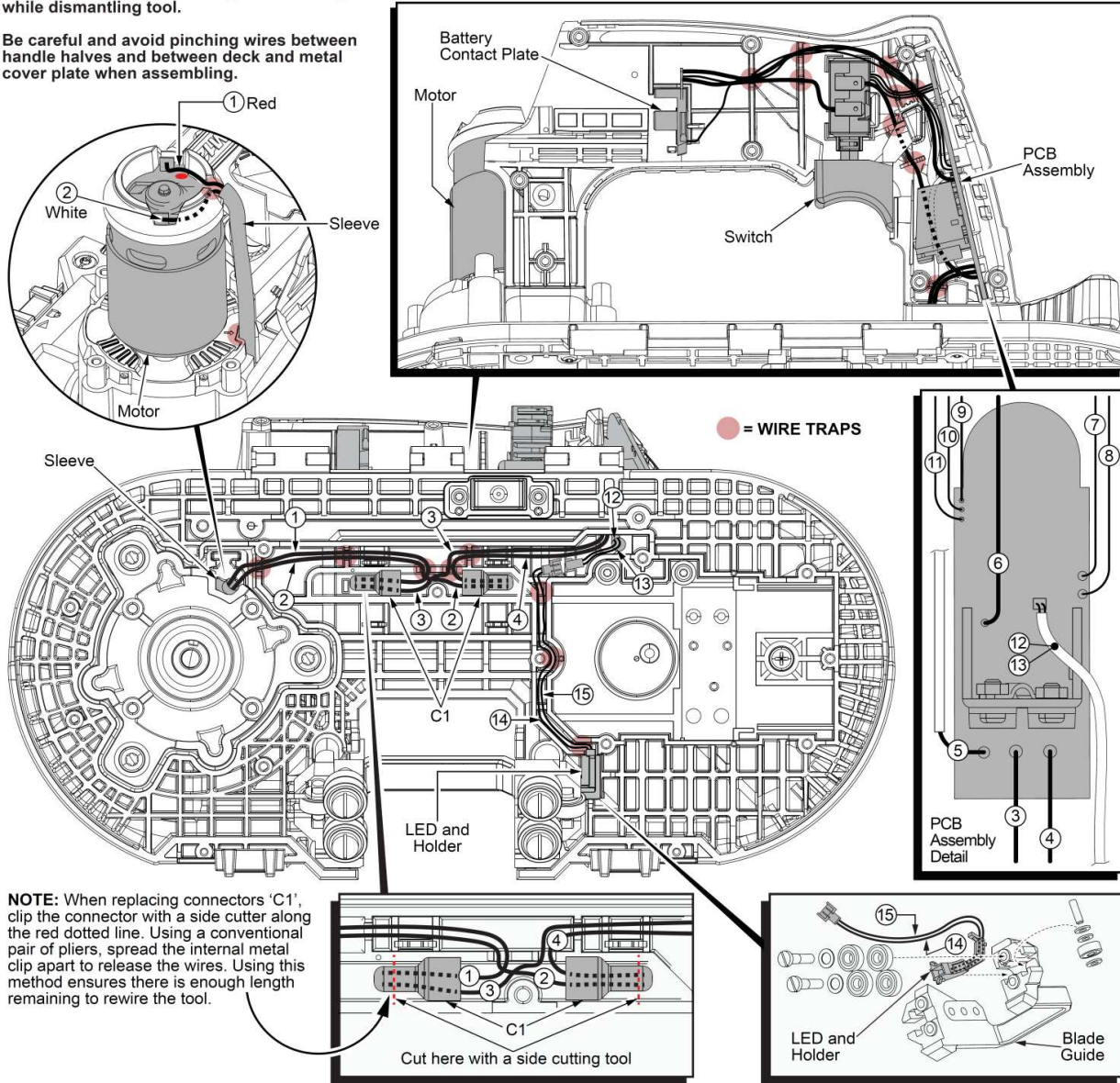
**May-20**

Starting Serial Number:

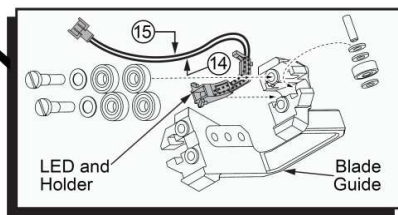
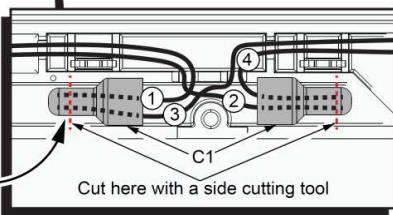
VERSION A - C2014

As an aid to reassembly, take notice of wire routing and position in wire guides and traps while dismantling tool.

Be careful and avoid pinching wires between handle halves and between deck and metal cover plate when assembling.



**NOTE:** When replacing connectors 'C1', clip the connector with a side cutter along the red dotted line. Using a conventional pair of pliers, spread the internal metal clip apart to release the wires. Using this method ensures there is enough length remaining to rewire the tool.



### WIRING SPECIFICATIONS

Wire No.	Wire Color	Origin or Gauge	Length	Terminals, Connectors and 1 or 2 End Wire Preparation
1	Red	----	----	Connect one end to positive terminal (red dot) on motor. Join other end with red wire #3 using connector C1.
2	White	----	----	Connect one end to negative motor terminal. Join other end to white wire #4 using connector C1.
3	Red	----	----	Component of PCBA of switch assembly. Route from PCBA and join with red wire #1 using connector C1.
4	White	----	----	Component of PCBA of switch assembly. Route from PCBA and join with white wire #2 using connector C1.
5	Black	----	----	Component of PCBA of switch assembly. Wire is sleeved and routed between PCBA and switch.
6	Black	----	----	Component of PCBA of switch assembly. Wire is routed between PCBA and battery contact plate.
7	White	----	----	Component of PCBA of switch assembly. Wire is routed between PCBA and battery contact plate.
8	Red	----	----	Component of PCBA of switch assembly. Wire is routed between PCBA and battery contact plate.
9	Black	----	----	Component of PCBA of switch assembly. Wire is routed between PCBA and switch.
10	Blue	----	----	Component of PCBA of switch assembly. Wire is routed between PCBA and switch.
11	Yellow	----	----	Component of PCBA of switch assembly. Wire is routed between PCBA and switch.
12	White	----	----	Component of PCBA of switch assembly. Sleeved with red wire #13, male connector joins to wires #14 & #15.
13	Red	----	----	Component of PCBA of switch assembly. Sleeved with white wire #12, male connector joins to wires #14 & #15.
14	White	----	----	Component of LED assembly along with red wire #15. Female connector joins to wires #12 and #13.
15	Red	----	----	Component of LED assembly along with white wire #14. Female connector joins to wires #12 and #13.