



M12 CC

SERVICE PARTS DIAGRAM

TTI Model Number: 018 073 018, 024, 025

M12™ SUB COMPACT CABLE CUTTER

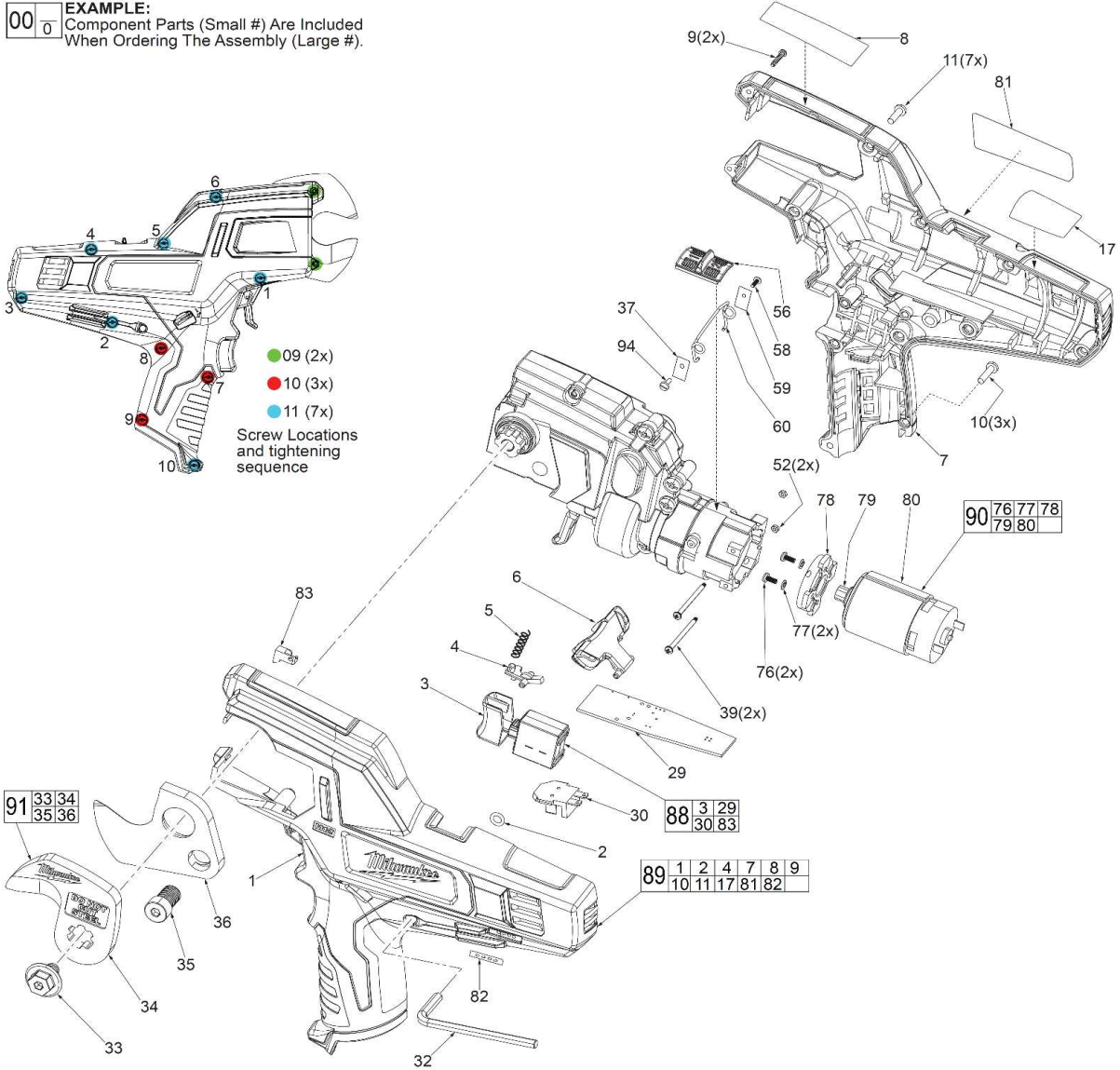
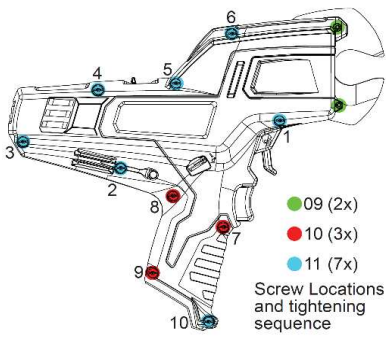
Bulletin Date:

Mar-21

Starting Serial Number:

VERSION A - G2015

EXAMPLE:
Component Parts (Small #) Are Included
When Ordering The Assembly (Large #).





M12 CC

SERVICE PARTS DIAGRAM

TTI Model Number: 018 073 018, 024, 025

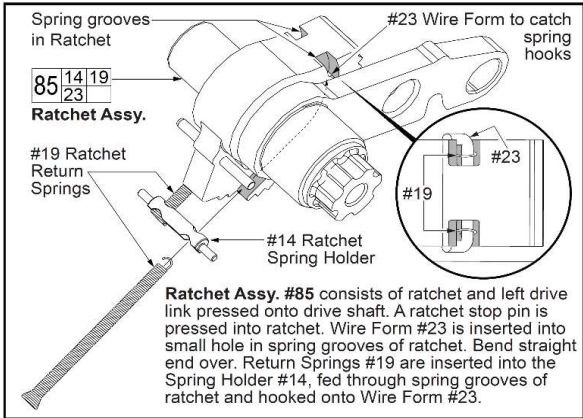
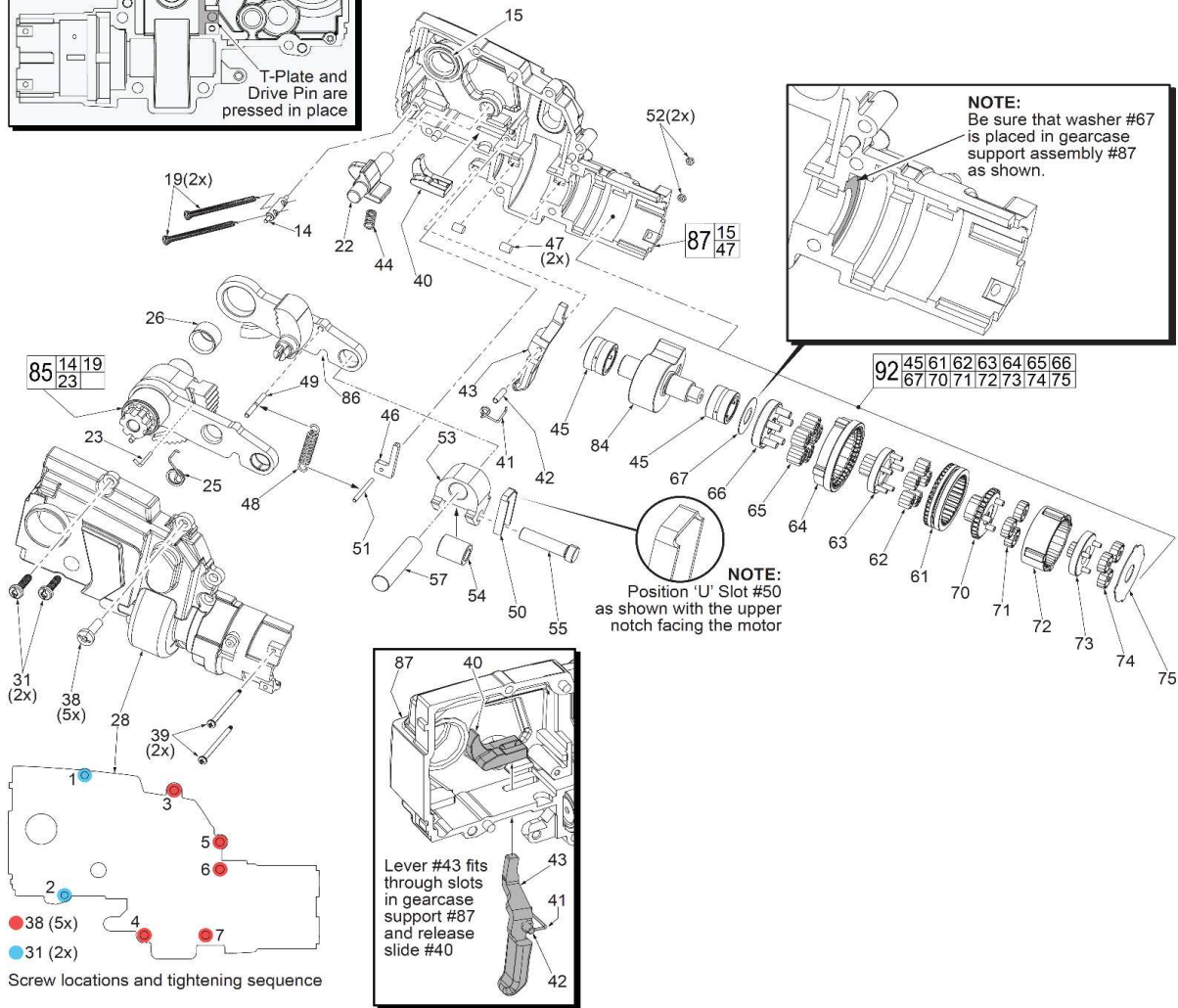
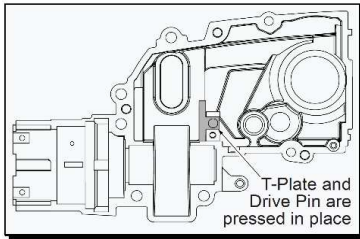
M12™ SUB COMPACT CABLE CUTTER

Bulletin Date:

Mar-21

Starting Serial Number:

VERSION A - G2015





M12 CC

SERVICE PARTS LIST

TTI Model Number: 018 073 018, 024, 025

M12™ SUB COMPACT CABLE CUTTER

Bulletin Date:

Mar-21

Starting Serial Number:

VERSION A - G2015

ITEM	PART NUMBER	PART DESCRIPTION	QTY (PCS)
1	-	HOUSING SUPPORT	1
2	561529001	O-RING	1
3	760438029	SWITCH	1
4	523911002	DRIVE LINK SWITCH LOCK-OUT	1
5	692528002	SPRING	1
6	523910001	SWITCH LOCK-OUT	1
7	-	HOUSING COVER	1
8	941046393	WARNING LABEL <i>018073018 KR VERSION</i>	1
8	940221319	WARNING LABEL <i>018073024 ASIA, 025 APJ VERSION</i>	1
9	661047001	M2.6 X 14MM SCREW	2
10	661122001	6-19 X .5" SCREW	3
11	661005001	6-19 X .687 SCREW	7
14	673098002	RATCHET SPRING HOLDER	1
15	693632001	BUSHING	1
17	940222046	JAM RELEASE LABEL	1
19	694083001	RATCHET RETURN SPRING	2
22	611535018	FOLLOWER PAWL	1
23	693131001	WIRE FORM	1
25	693080003	TORSION SPRING	1
26	693632002	BUSHING	1
28	203015002	GEARCASE COVER ASSEMBLY WITH T-PLATE & DRIVE PIN	1
29	280197019	PCBA	1
30	303508006	BATTERY CONTACT PLATE	1
31	661113008	8-32 X 5/8" SCREW	2
32	691255004	3/16" X 3-5/8" HEX KEY	1
33	661651001	MOVING BLADE FITTED BOLT	1
34	681554001	MOVING BLADE	1
35	661652001	STATIONARY BLADE FIXED BOLT	1
36	681553001	STATIONARY BLADE	1
37	621326011	PLATE WASHER WITH 3.3MM HOLE	1
38	660984002	10-24 X 5/8" SCREW	5
39	661638001	M2 SCREW	2
40	641844002	RELEASE SLIDE	1



M12 CC

SERVICE PARTS LIST

TTI Model Number: 018 073 018, 024, 025

M12™ SUB COMPACT CABLE CUTTER

Bulletin Date:

Mar-21

Starting Serial Number:

VERSION A - G2015

ITEM	PART NUMBER	PART DESCRIPTION	QTY (PCS)
41	693080002	TORSION SPRING	1
42	673048002	PIN- RELEASE LEVER	1
43	304753001	RELEASE LEVER	1
44	693048006	RETURN SPRING	1
45	681557001	NEEDLE BEARING	2
46	634214001	ROLLER PIN RAIL	1
47	560075002	RUBBER SLUG	2
48	693048003	DRIVE LINK RETURN SPRING	1
49	621327001	MOUNTING SHAFT	1
50	634215001	U SLOT	1
51	673048001	PIN	1
52	661378001	M2 HEX NUT	2
53	611534001	CARRIER	1
54	611532002	CAM ROLLER	1
55	611533001	ROLLER PIN	1
56	350909001	HIGH-LOW SLIDE BUTTON	1
57	611533002	ROLLER CARRIER PIN	1
58	661659001	M2 SCREW	1
59	634771002	PLATE WASHER WITH 2.3MM HOLE	1
60	692225006	SPEED CHANGE LEVER	1
61	611150003	3RD STAGE RING GEAR	1
62	611123002	3RD STAGE PLANET GEAR	5
63	611106003	4TH STAGE SUN GEAR	1
64	611150002	4TH STAGE RING GEAR	1
65	611147002	4TH STAGE PLANET GEAR	5
66	611151002	4TH STAGE CARRIER	1
67	680680002	WASHER	1
70	611106002	3RD STAGE SUN GEAR	1
71	611103002	2ND STAGE PLANET GEAR	3
72	611104002	1ST AND 2ND STAGE RING GEAR	1
73	611105002	2ND STAGE SUN GEAR	1
74	611103001	1ST STAGE PLANET GEAR	3



M12 CC

SERVICE PARTS LIST

TTI Model Number: 018 073 018, 024, 025

M12™ SUB COMPACT CABLE CUTTER

Bulletin Date:

Mar-21

Starting Serial Number:

VERSION A - G2015

ITEM	PART NUMBER	PART DESCRIPTION	QTY (PCS)
75	634018001	MOTOR SPACER PLATE	1
76	660211062	M3 X 6MM SCREW	2
77	670028003	LOCK WASHER	2
78	523954001	MOTOR MOUNTING PLATE	1
79	611102001	PINION	1
80	740215006	MOTOR	1
81	941046392	SERVICE NAMEPLATE <i>018073018 KR VERSION</i>	1
81	941047500	SERVICE NAMEPLATE <i>018073024 ASIA VERSION</i>	1
81	941050555	SERVICE NAMEPLATE <i>018073025 APJ VERSION</i>	1
82	-	FUEL GAUGE LABEL	1
83	-	LED	1
84	202093001	CAM AND CAM SHAFT ASSEMBLY	1
85	202094003	DRIVE SHAFT/LINK/RATCHET ASSEMBLY	1
86	202095003	DRIVE PAWL/LINK/RELEASE LEVER ASSEMBLY	1
87	202096003	GEARCASE SUPPORT ASSEMBLY	1
88	202098001	SWITCH ASSEMBLY	1
89	202099006	HANDLE ASSEMBLY	1
90	202100001	MOTOR ASSEMBLY	1
91	202101001	BLADE SET	1
92	203839001	GEAR/CAM ASSEMBLY	1
93	301928015	CARRYING CASE <i>018073018 KR VERSION</i>	1
94	660211046	M3 X 6MM SCREW	1
1200	-	TYPE L GREASE	1
1201	-	TYPE P GREASE	1



M12 CC

SERVICE INSTRUCTION

TTI Model Number: 018 073 018, 024, 025

M12™ SUB COMPACT CABLE CUTTER

Bulletin Date:

Mar-21

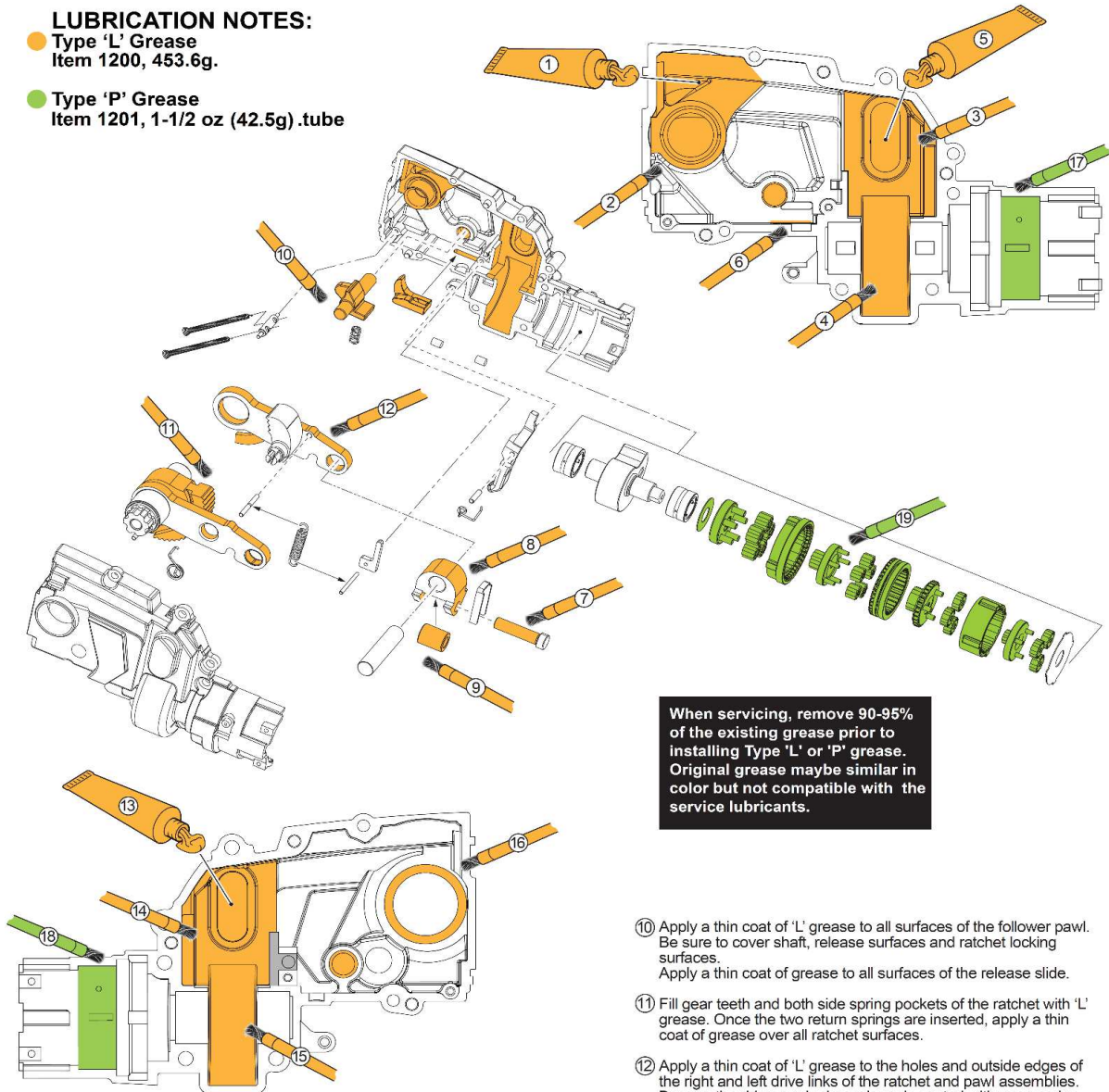
Starting Serial Number:

VERSION A - G2015

LUBRICATION NOTES:

● Type 'L' Grease
Item 1200, 453.6g.

● Type 'P' Grease
Item 1201, 1-1/2 oz (42.5g) .tube



When servicing, remove 90-95% of the existing grease prior to installing Type 'L' or 'P' grease. Original grease maybe similar in color but not compatible with the service lubricants.

- ① Place 5 grams (approx. 3/16 ounce) of Type 'L' grease in the upper left corner of gearcase support assembly.
- ② Apply a thin coat of 'L' grease around and in the drive shaft bushing.
- ③ Apply a thin coat of 'L' grease to area shown. Be sure to cover the roller carrier slot and the surfaces the roller pin will have contact with.
- ④ Coat the cam pocket of the gearcase support with 'L' grease.
- ⑤ Place 5 grams (3/16 ounce) of 'L' grease in carrier pin pocket.
- ⑥ Coat the release slide slot in gearcase support with 'L' grease.
- ⑦ Apply a thin coat of 'L' grease to the roller pin prior to assembly with the carrier and roller.
- ⑧ Coat the top and bottom surfaces of the carrier with 'L' grease.
- ⑨ After assembly in the carrier with the pin, add 3 grams (approx. 1/8 oz.) of 'L' grease to the surface of the roller.

- ⑩ Apply a thin coat of 'L' grease to all surfaces of the follower pawl. Be sure to cover shaft, release surfaces and ratchet locking surfaces. Apply a thin coat of grease to all surfaces of the release slide.
- ⑪ Fill gear teeth and both side spring pockets of the ratchet with 'L' grease. Once the two return springs are inserted, apply a thin coat of grease over all ratchet surfaces.
- ⑫ Apply a thin coat of 'L' grease to the holes and outside edges of the right and left drive links of the ratchet and pawl assemblies. Be sure the drive pawl release lever is coated with grease also.
- ⑬ Place 5 grams (3/16 ounce) of 'L' grease in carrier pin pocket.
- ⑭ Apply a thin coat of 'L' grease to area shown. Be sure to cover the roller carrier slot and the surfaces the roller pin will have contact with.
- ⑮ Coat the cam pocket of the gearcase support with 'L' grease.
- ⑯ Place a thin layer of 'L' grease to the inside walls of the gearcase cover bushing and follower pawl shaft hole. Apply a thin coat of grease to the area outside the bushing.
- ⑰ Apply a thin coat of Type 'P' grease to the ring gear pocket of the gearcase support assembly.
- ⑱ Apply a thin coat of Type 'P' grease to the ring gear pocket of the gearcase cover.
- ⑲ Place a thin coat of 'P' grease to the gear components shown above. Be sure that all ring gear teeth and planetary gear teeth are completely covered.



M12 CC

SERVICE INSTRUCTION

TTI Model Number: 018 073 018, 024, 025

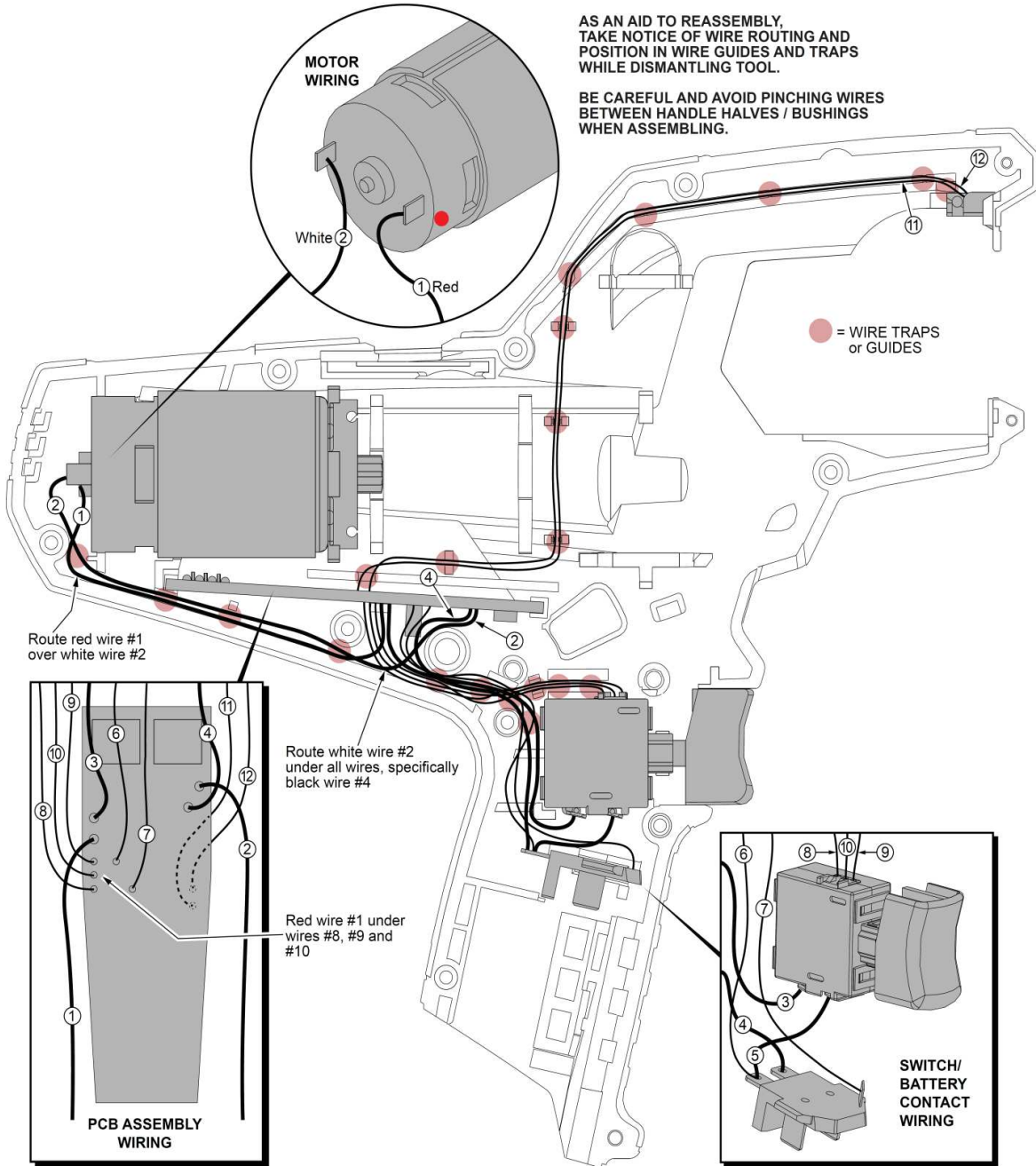
M12™ SUB COMPACT CABLE CUTTER

Bulletin Date:

Mar-21

Starting Serial Number:

VERSION A - G2015



- | | | | |
|----------|---|---------|---------------------|
| ① RED | PCB to motor positive (MTR+) | ⑨ BLACK | PCB to switch (blk) |
| ② WHITE | PCB to motor negative (MTR-) | ⑩ BLUE | PCB to switch (blu) |
| ③ RED | PCB to switch (B+ SW) | ⑪ BLACK | PCB to LED (LED-) |
| ④ BLACK | PCB to negative battery contact (BAT-) | ⑫ BLUE | PCB to LED (LED+) |
| ⑤ RED | Switch to positive battery contact (BAT+) | | |
| ⑥ RED | PCB to battery contact (BAT+) | | |
| ⑦ WHITE | PCB to battery contact (BAT_ther) | | |
| ⑧ YELLOW | PCB to switch (ylw) | | |