



# M12 PCG/310C

SERVICE PARTS DIAGRAM

TTI Model Number: 018 081 035, 036, 045

M12™ SUB COMPACT CAULK GUN - 310C

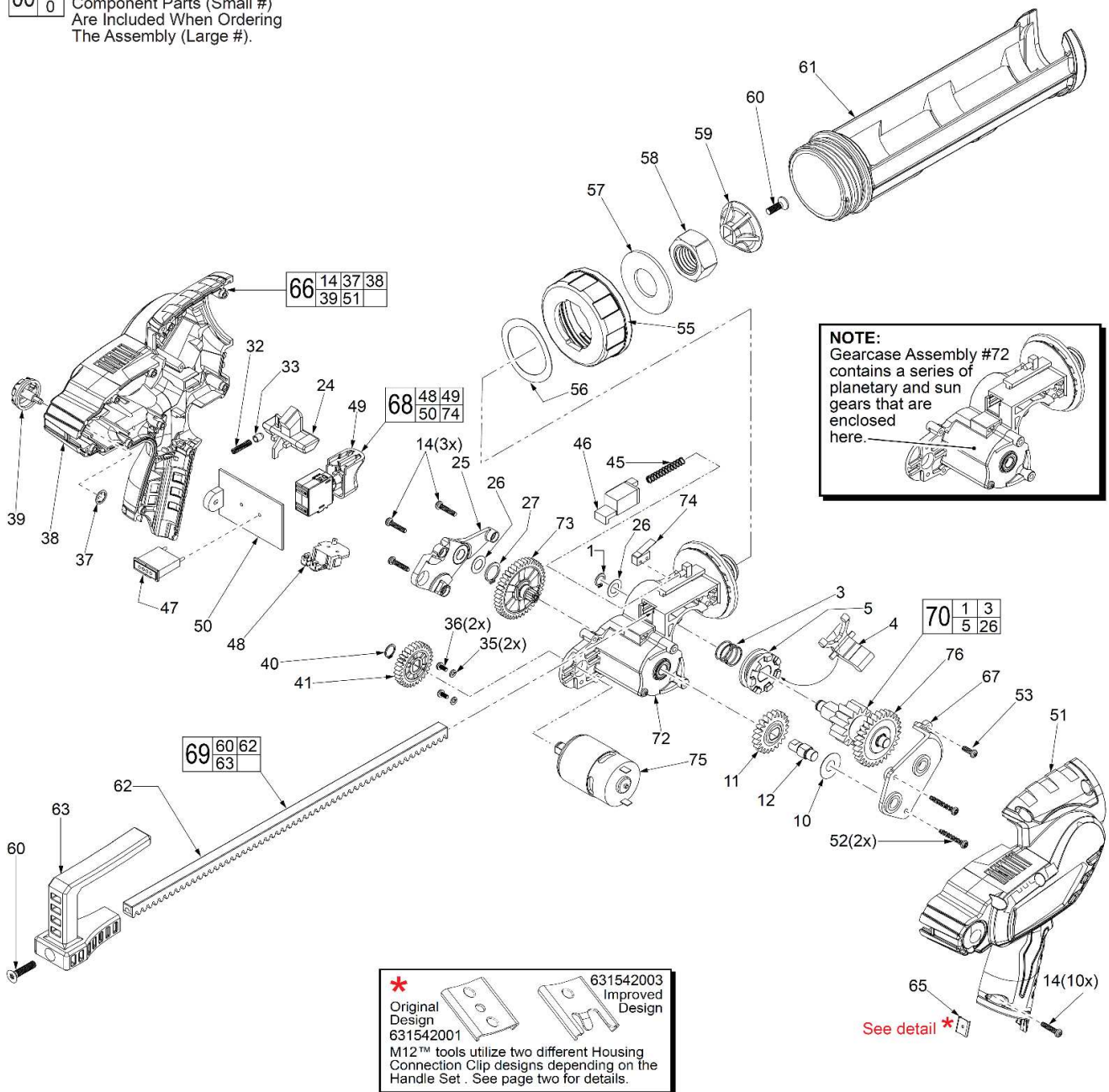
Bulletin Date:

Apr-20

Starting Serial Number:

VERSION A - J2015

**EXAMPLE:**  
 Component Parts (Small #)  
 Are Included When Ordering  
 The Assembly (Large #).



Grease 1200



# M12 PCG/310C

SERVICE PARTS DIAGRAM

TTI Model Number: 018 081 035, 036, 045

M12™ SUB COMPACT CAULK GUN - 310C

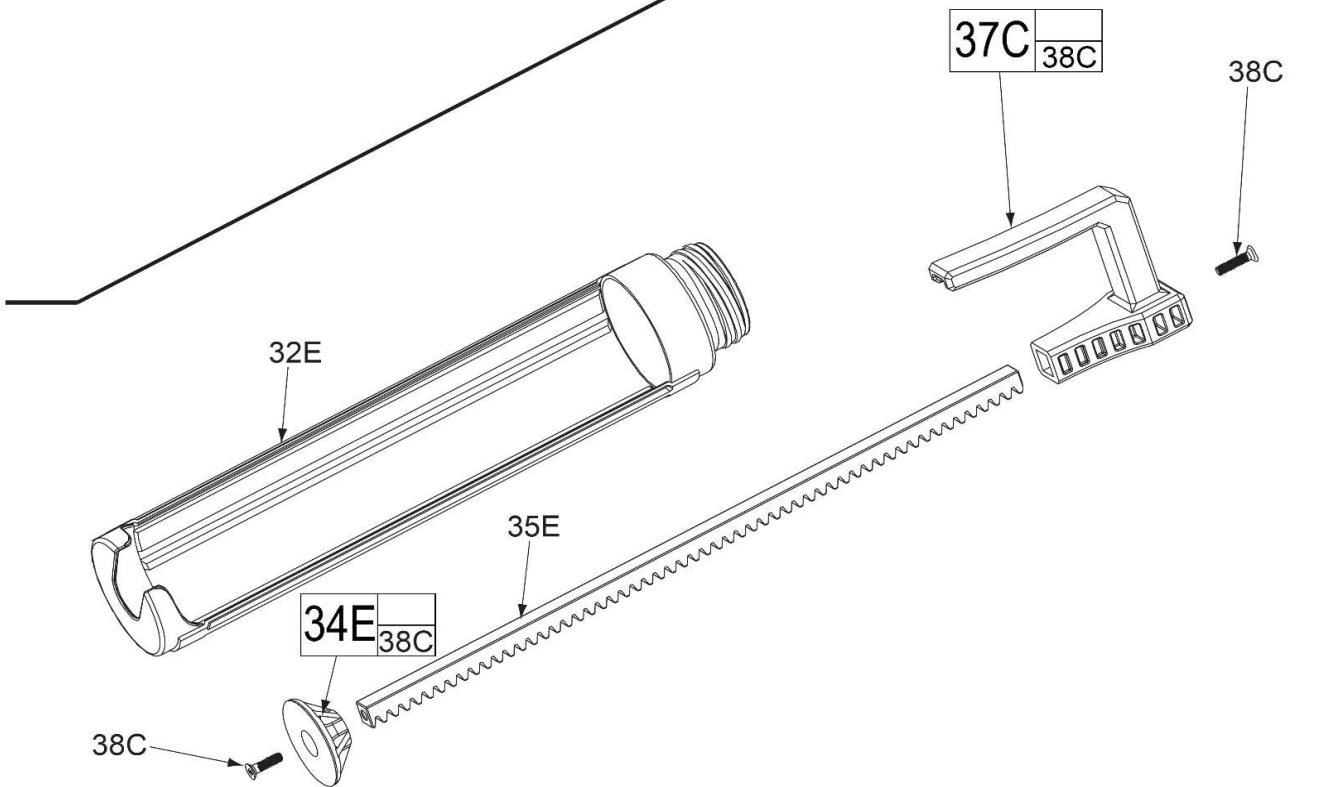
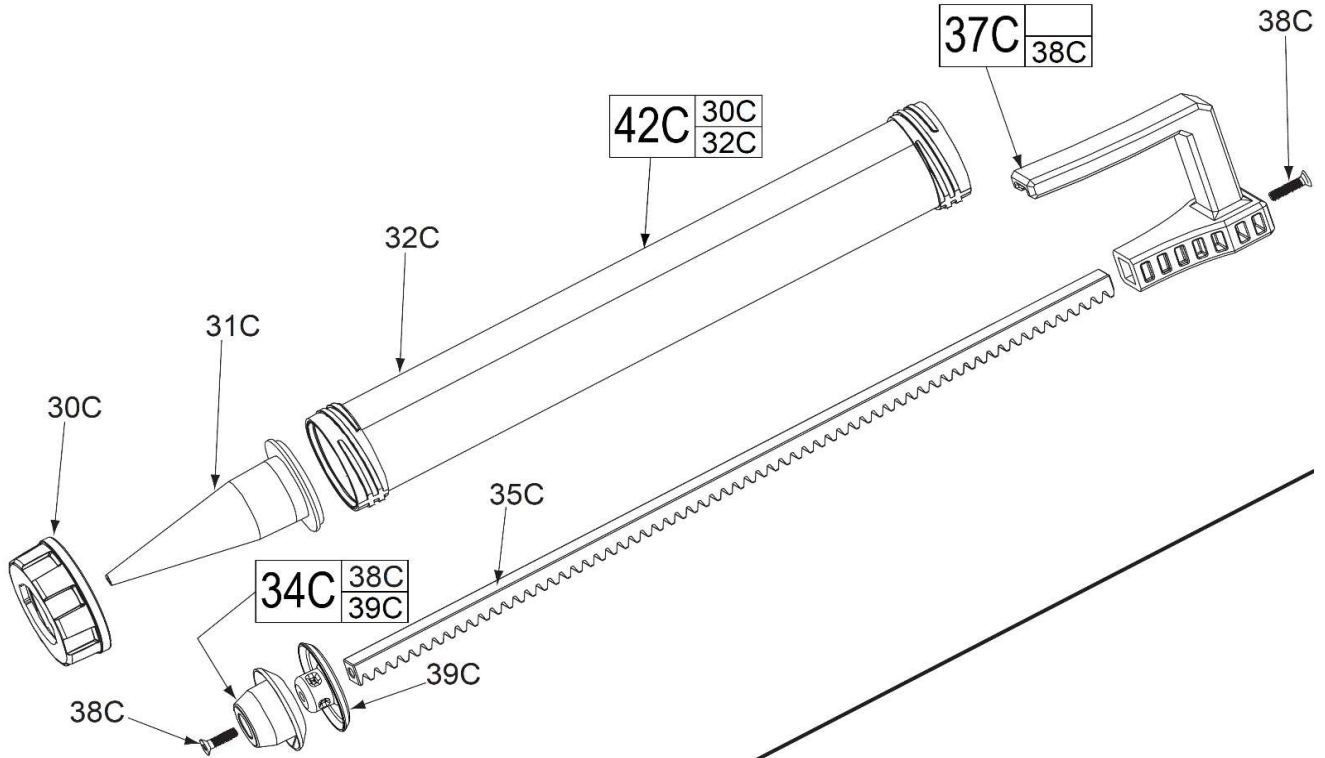
Bulletin Date:

Apr-20

Starting Serial Number:

VERSION A - J2015

## 20 Oz. ALUMINUM SAUSAGE CARTRIDGE KIT Cat.



## QUART CARTRIDGE KIT Cat.



# M12 PCG/310C

SERVICE PARTS LIST

TTI Model Number: 018 081 035, 036, 045

**M12™ SUB COMPACT CAULK GUN - 310C**

**Bulletin Date:**

**Apr-20**

**Starting Serial Number:**

**VERSION A - J2015**

ITEM	PART NUMBER	PART DESCRIPTION	QTY (PCS)
1	633036001	RETAINING RING	1
3	693274001	RETURN SPRING	1
4	524663001	CLUTCH YOKE	1
5	-	SLIDE CLUTCH	1
10	671261001	WASHER	1
11	611720001	INPUT GEAR	1
12	621391001	INPUT SHAFT	1
14	660031017	M3.5 X 15MM SCREW	14
24	524388001	SHUTTLE LOCK	1
25	305201001	LEFT COVER	1
26	634231001	WASHER	2
27	680337001	RETAINING RING	1
30C	522614003	CARTRIDGE CAP	1
31C	522618001	PLASTIC, TUBE CONE	1
32	692505001	DETENT SPRING	1
32C	692806001	600ML SAUSAGE TUBE, AL DIA 50.8 X 375MM \ SLIVER	1
32E	304894001	QUART CARTRIDGE CARRIAGE	1
33	633289001	DETENT	1
34C	201925002	SAUSAGE PLUNGER	1
34E	201924001	QUART PLUNGER	1
35	670028003	SPRING WASHER	2
35C	693295003	RACK FOR 600ML SAUSAGE STEEL	1
35E	693295009	RACK FOR QUART STEEL	1
36	660211006	M3 X 6MM SCREW	2
37	633690001	CLIP	1
37C	202214001	PLUNGER HANDLE	1
38	-	HOUSING-LEFT	1
38C	661666001	HANDLE SCREW	1
39	350444001	SPEED DIAL	1
39C	633929001	STAMPING, BACK PLATE	1
40	670608002	RETAINING RING	1
41	524398001	INPUT GEAR	1
42C	201882001	20 OZ,ALUMINUM BARREL ASSEMBLY	1
45	693324001	SPRING	1
46	524447001	EOT ACTUATOR	1
47	524481001	LIGHT PIPE WITH FUEL GAUGE LABEL	1
48	-	BATTERY CONTACT PLATE ASSEMBLY	1
49	-	SWITCH	1



# M12 PCG/310C

SERVICE PARTS LIST

TTI Model Number: 018 081 035, 036, 045

**M12™ SUB COMPACT CAULK GUN - 310C**

**Bulletin Date:**

**Apr-20**

**Starting Serial Number:**

**VERSION A - J2015**

ITEM	PART NUMBER	PART DESCRIPTION	QTY (PCS)
50	-	PCB ASSEMBLY	1
51	-	HOUSING-RIGHT	1
52	660031022	M3.5 X 26MM SCREW	2
53	660031023	M3.5 X 10MM SCREW	1
55	522614003	CARTRIDGE MOUNTING CAP	1
56	633909001	WAVE WASHER	1
57	633626001	FLAT WASHER	1
58	524445001	HEX NUT	1
59	522619001	PLUNGER	1
60	661666001	M5 X .8 SCREW	2
61	305111001	10 OZ. CARTRIDGE HOLDER	1
62	693295010	10 OZ. RACK	1
63	524446001	RACK HANDLE	1
65	631542003	HOUSING CONNECTION CLIP	1
66	202207001	HANDLE ASSEMBLY	1
67	202216002	RIGHT COVER ASSEMBLY	1
68	203854005	SWITCH ASSEMBLY	1
69	202209001	10 OZ. ROD ASSEMBLY	1
70	202210002	CLUTCH GEAR ASSEMBLY	1
72	202211002	GEARCASE ASSEMBLY	1
73	202212002	OUTPUT GEAR ASSEMBLY	1
74	-	EOT SWITCH	1
75	202213002	MOTOR ASSEMBLY WITH DRIVE HUB	1
76	-	OUTPUT GEAR ASSEMBLY	1
77	941048039	SERVICE NAMEPLATE	1
1200	-	TYPE P GREASE 1.5 oz/42g tube	1





# M12 PCG/310C

SERVICE INSTRUCTION

TTI Model Number: 018 081 035, 036, 045

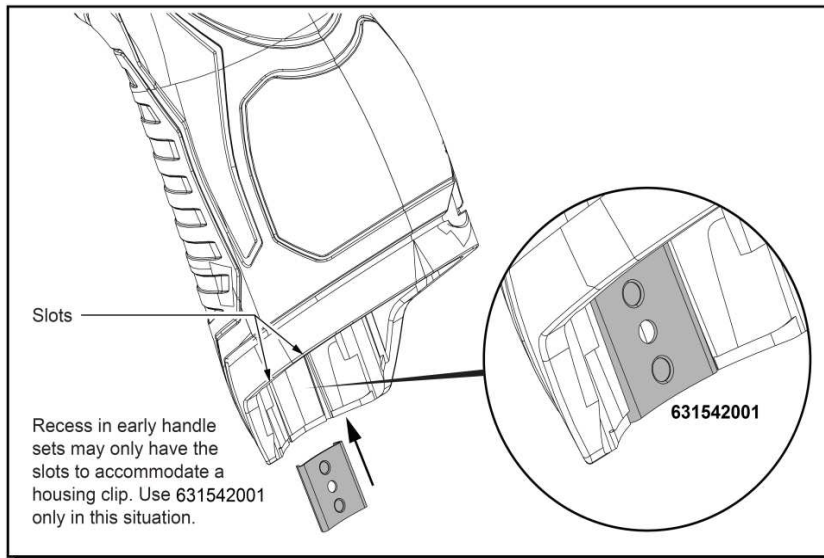
## M12™ SUB COMPACT CAULK GUN - 310C

**Bulletin Date:**

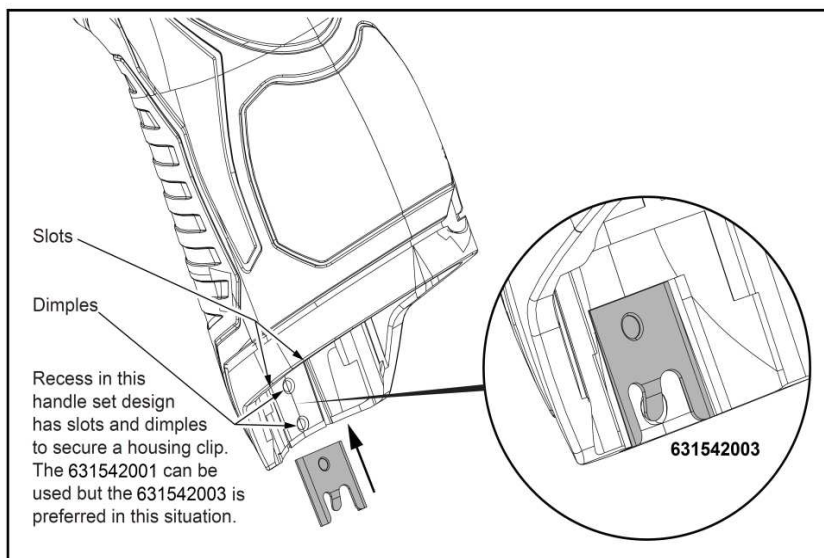
**Apr-20**

**Starting Serial Number:**

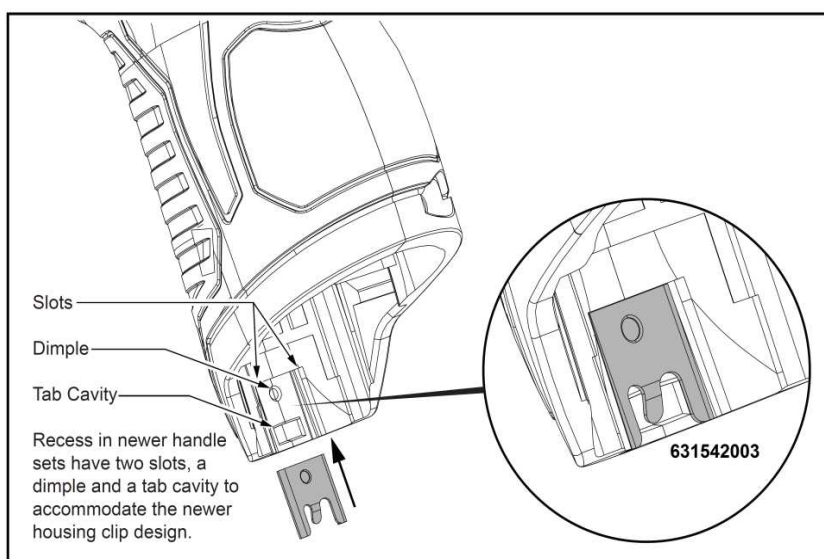
**VERSION A - J2015**



Early M12™ Handle Sets utilize **Housing Connection Clip No. 631542001**. Install this clip design by aligning the side rails of the clip with the two slots in the handle set. Gently push into place with the aid of a small flat blade screwdriver or a similar instrument. Be sure that the clip is properly seated in both slots and that the clip is flush to sub-flush to the end of the handle set. To remove the clip, use the same small flat blade screwdriver or a similar instrument and push the clip out of the handle set. If the clip is loose or will not stay in place, a needle nose pliers can be used to gently bend/pinch the side rails of the clip. If the clip is damaged do not use, replace with a new 631542001 housing clip.



Updated M12™ Handle Sets utilize **Housing Connection Clips No. 631542001 and 631542003**. (The 631542003 is a preferred upgrade). Install this clip design by aligning the side rails of the clip with the two slots in the handle set. Gently push into place with the aid of a small flat blade screwdriver or a similar instrument. Be sure that the clip is properly seated in both slots and that the tab of the clip snaps down in the round dimpled cavity of the handle set. Be sure that the clip is flush to sub-flush to the end of the handle set. To remove the clip, use the same small flat blade screwdriver or a similar instrument and lift up on the clip tab while pushing the clip out of the handle set. Use a needle nose pliers to gently rebend the clip tab if necessary. If the tab on the clip is damaged during this process and is loose or will not stay in place, replace with a new 631542003 clip.



Newer M12™ Handle Sets utilize **Housing Connection Clip No. 631542003**. Install this clip design by aligning the side rails of the clip with the two slots in the handle set. Gently push into place with the aid of a small flat blade screwdriver or a similar instrument. Be sure that the clip is properly seated in both slots and that the tab of the clip snaps down in the rectangular cavity of the handle set. Be sure that the clip is flush to sub-flush to the end of the handle set. To remove the clip, use the same small flat blade screwdriver or a similar instrument and lift the clip tab out of the cavity while pushing the clip out of the handle set. Use a needle nose pliers to gently rebend the clip tab if necessary. If the tab on the clip is damaged during this process and is loose or will not stay in place, replace with a new 631542003 clip.



# M12 PCG/310C

SERVICE INSTRUCTION

TTI Model Number: 018 081 035, 036, 045

M12™ SUB COMPACT CAULK GUN - 310C

Bulletin Date:

Apr-20

Starting Serial Number:

VERSION A - J2015

**NOTE:** Clutch Yoke #4 is to be the first clutch component installed and the last component removed from the gearcase assembly.

Install side pins of clutch yoke #4 into the pivot sockets of the gearcase.

Insert slide clutch #5 onto clutch yoke with raised driving lugs of the slide clutch oriented as shown. Lugs are to face clutch gear assembly #70.

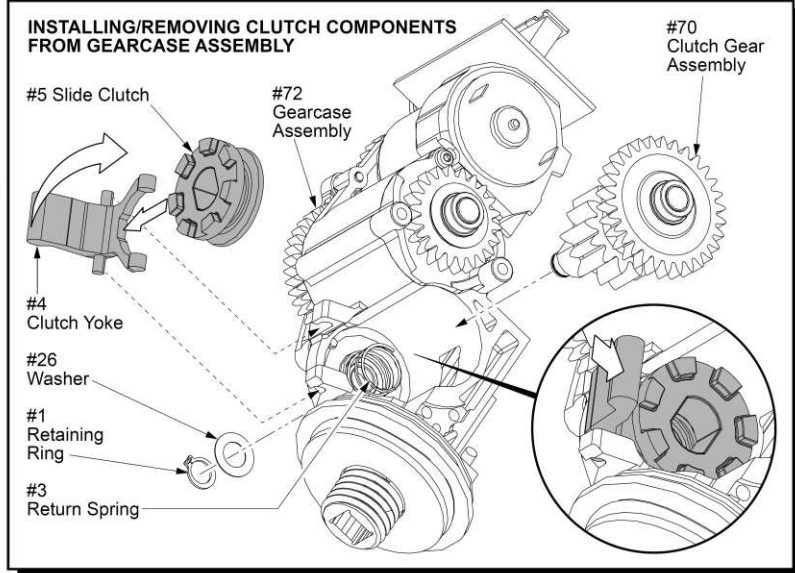
Place the return spring #3 into the recessed pocket of the gearcase.

While holding slide clutch in place on the clutch yoke, gently pivot the two parts into the clutch/gear cavity of gearcase. **NOTE:** the slide clutch may have to be slightly lifted out of place on the yoke during the pivoting process to avoid any interference with the cavity walls.

Be sure return spring is still in place in the recess pocket of gearcase when the clutch yoke and slide clutch are completely pivoted in place.

Press clutch yoke lever to assure proper operation in pocket. If spring comes out of recess, start over.

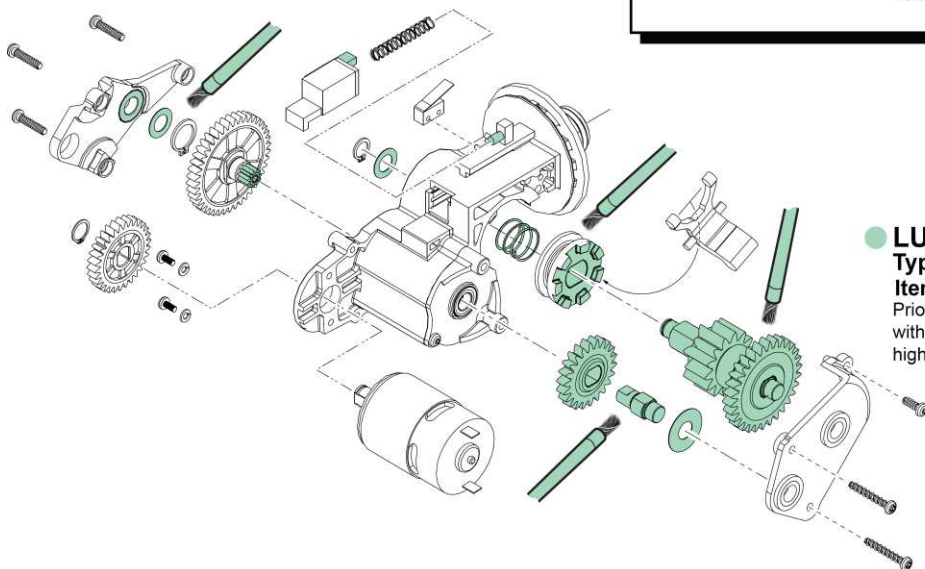
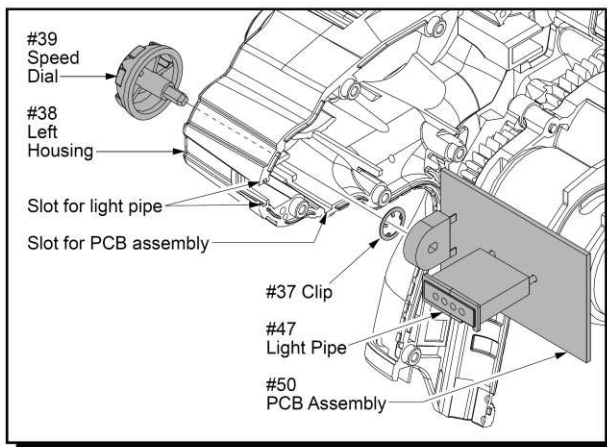
Hold the lever of the clutch yoke completely down to draw in the return spring and slide clutch. Place shaft of the clutch gear assembly #70 through the holes in the slide clutch and gearcase assembly. Secure the clutch gear assembly with washer #26 and retaining ring #1.



Insert speed dial #39 into hole at rear of left housing half #38. Secure dial with clip #37. Set dial to the '1' position at the arrow in the housing. Speed dial will turn in a counterclockwise direction.

Align board edges of PCB assembly #50 and the face plate edges of the light pipe #47 with the slots in the housing half.

Carefully insert the PCB assembly and light pipe into the slots. Route the blue and black wires from the PCBA (for the EOT switch #74) into the wire trap of handle half above motor. Align the double flats of the speed dial with the double flats in the hole of the potentiometer. Gently apply pressure to engage shaft of speed dial in hole of potentiometer. Press and fully seat PCBA and light pipe in the handle half.



### LUBRICATION NOTES:

Type 'P' Grease

Item 1200, 1.5 oz. / 42g tube

Prior to reinstalling, clean gear assemblies with a clean, dry cloth. Lightly coat all parts highlighted here with 'P' grease.





# M12 PCG/310C

SERVICE INSTRUCTION

TTI Model Number: 018 081 035, 036, 045

M12™ SUB COMPACT CAULK GUN - 310C

Bulletin Date:

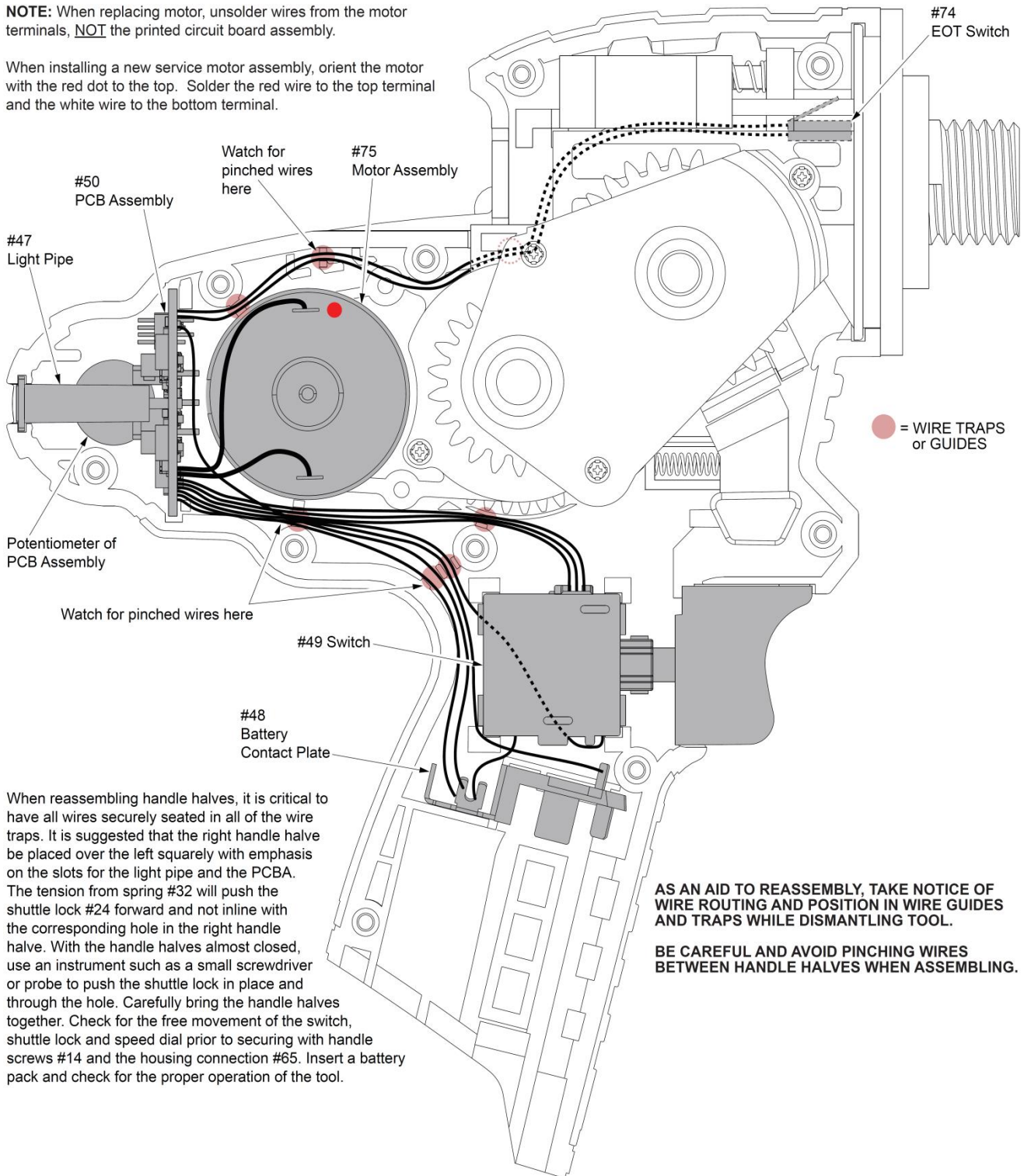
Apr-20

Starting Serial Number:

VERSION A - J2015

**NOTE:** When replacing motor, unsolder wires from the motor terminals, NOT the printed circuit board assembly.

When installing a new service motor assembly, orient the motor with the red dot to the top. Solder the red wire to the top terminal and the white wire to the bottom terminal.



When reassembling handle halves, it is critical to have all wires securely seated in all of the wire traps. It is suggested that the right handle half be placed over the left squarely with emphasis on the slots for the light pipe and the PCBA. The tension from spring #32 will push the shuttle lock #24 forward and not inline with the corresponding hole in the right handle half. With the handle halves almost closed, use an instrument such as a small screwdriver or probe to push the shuttle lock in place and through the hole. Carefully bring the handle halves together. Check for the free movement of the switch, shuttle lock and speed dial prior to securing with handle screws #14 and the housing connection #65. Insert a battery pack and check for the proper operation of the tool.

AS AN AID TO REASSEMBLY, TAKE NOTICE OF WIRE ROUTING AND POSITION IN WIRE GUIDES AND TRAPS WHILE DISMANTLING TOOL.

BE CAREFUL AND AVOID PINCHING WIRES BETWEEN HANDLE HALVES WHEN ASSEMBLING.