



# M18 BLID

SERVICE PARTS DIAGRAM

TTI Model Number: 018 139 012, 013, 014, 015, 022, 023

M18 COMPACT BRUSHLESS IMPACT DRIVER

Bulletin Date:

Mar-20

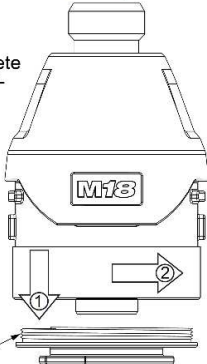
Starting Serial Number:

VERSION A - E2016

**IMPORTANT NOTE: Gearcase end cap #24 is LEFT HAND THREAD!**

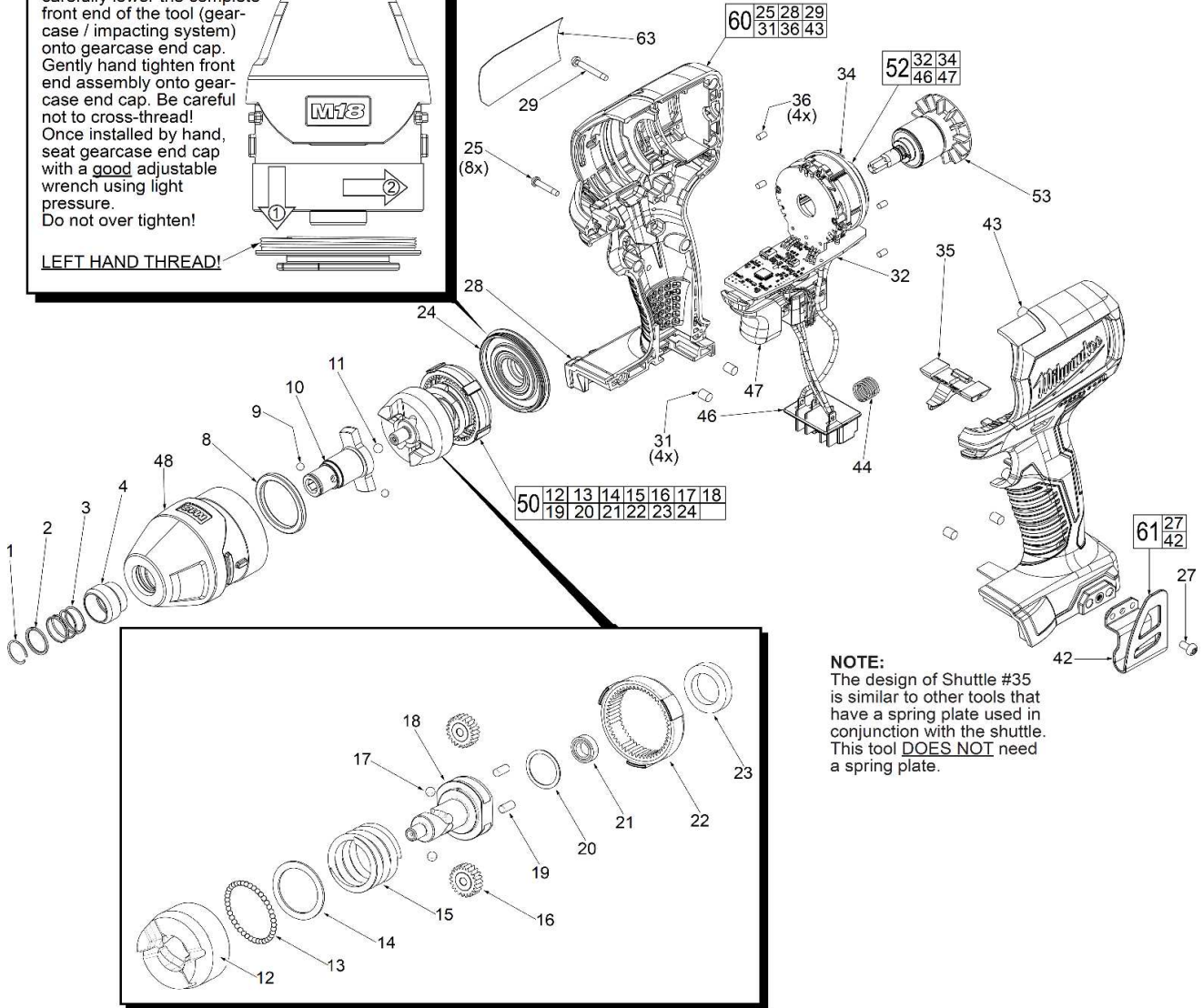
As an aid to assembly, carefully lower the complete front end of the tool (gearcase / impacting system) onto gearcase end cap. Gently hand tighten front end assembly onto gearcase end cap. Be careful not to cross-thread! Once installed by hand, seat gearcase end cap with a good adjustable wrench using light pressure. Do not over tighten!

**LEFT HAND THREAD!**



**EXAMPLE:**

Component Parts (Small #)  
Are Included When Ordering  
The Assembly (Large #).



**NOTE:**  
The design of Shuttle #35 is similar to other tools that have a spring plate used in conjunction with the shuttle. This tool **DOES NOT** need a spring plate.

**FIG. LUBRICATION (Type 'J' Grease, Item 1200):**

- 10 Lightly coat front washer surface of anvil with grease, place a dab in the ball cavities of anvil.
- 35,47 Be sure that oval slot in shuttle is over round pin on switch.
- 48 Coat inside of bushing inside front gearcase with grease.
- 50 **NOTE:** Do not wash impact assembly. Use a clean, dry cloth to wipe away any excess grease or contamination.
- 50 Lightly coat the I.D. of the ring gear and the center of the planet gears of impacting assembly with grease.
- 53 Coat pinion of rotor assembly with grease.
- 62 High voltage wire assembly is a component of the electronics assembly as well as an individual service part.





# M18 BLID

SERVICE PARTS LIST

TTI Model Number: 018 139 012, 013, 014, 015, 022, 023

**M18 COMPACT BRUSHLESS IMPACT DRIVER**

**Bulletin Date:**

**Mar-20**

**Starting Serial Number:**

**VERSION A - E2016**

ITEM	PART NUMBER	PART DESCRIPTION	QTY (PCS)
1	690258004	RETAINING RING	1
2	690266002	WASHER	1
3	690261003	SPRING	1
4	690260056	SLEEVE	1
8	523732001	PLASTIC WASHER	1
9	670220001	4.0MM STEEL BALL	1
10	621352139	1/4" HEX ANVIL	1
11	670219001	5MM STEEL BALL	1
12	693116042	HAMMER	1
13	670221001	3.0MM STEEL BALL	29
14	680335092	WASHER	1
15	693164033	SPRING	1
16	611575021	PLANET GEAR	2
17	680015001	3/16" STEEL BALL	2
18	621338037	CAM SHAFT	1
19	671565003	PLANET GEAR PIN	2
20	690426002	WASHER	1
21	681949004	BALL BEARING	1
22	611574012	RING GEAR	1
23	681758004	BALL BEARING	1
24	642049002	GEARCASE END CAP	1
25	660274003	4-20 X .625 SCREW	8
27	661082002	6-32 X 5/16" SCREW	1
28	-	HOUSING COVER - RIGHT	1
29	660837003	M3.0 X 22.5MM SCREW	1
31	560075002	RUBBER SLUG	4
32	280160190	PCBA	1
34	298062009	STATOR ASSEMBLY	1
35	528061001	FORWARD/REVERSE SHUTTLE	1
36	562951001	RUBBER SLUG	4
42	634138001	BELT CLIP	1
43	-	HOUSING SUPPORT - LEFT	1
44	691093001	COMPRESSION SPRING	1
46	302119005	TERMINAL CONNECTOR BLOCK	1
47	760521006	ON-OFF SWITCH	1
48	203390001	GEARCASE ASSEMBLY WITH BUSHING	1



# M18 BLID

SERVICE PARTS LIST

TTI Model Number: 018 139 012, 013, 014, 015, 022, 023

**M18 COMPACT BRUSHLESS IMPACT DRIVER**

**Bulletin Date:**

**Mar-20**

**Starting Serial Number:**

**VERSION A - E2016**

ITEM	PART NUMBER	PART DESCRIPTION	QTY (PCS)
50	203392001	IMPACTING ASSEMBLY	1
52	203395003	ELECTRONICS ASSEMBLY	1
53	203394001	ROTOR ASSEMBLY	1
60	203427001	HOUSING ASSEMBLY	1
61	202132001	BELT CLIP KIT	1
63	941046489	SERVICE NAMEPLATE	1
64	307640021	DYNACASE ASSEMBLY <i>018139012, 013 VERSION</i>	1
64	302862024	BMC <i>018139014, 015, 022, 023 VERSION</i>	1
1200	-	TYPE J GREASE	1



# M18 BLID

SERVICE INSTRUCTION

TTI Model Number: 018 139 012, 013, 014, 015, 022, 023

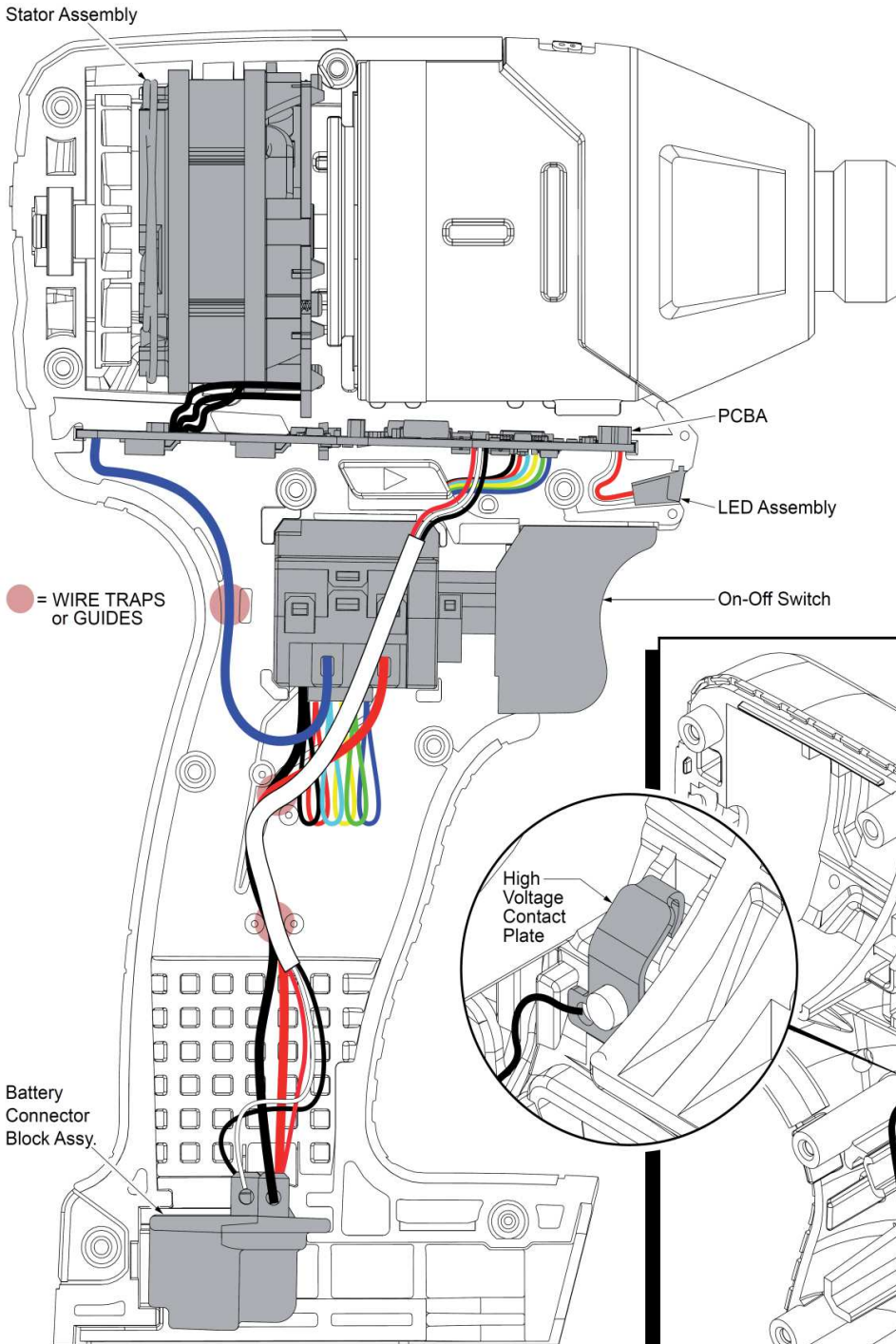
M18 COMPACT BRUSHLESS IMPACT DRIVER

Bulletin Date:

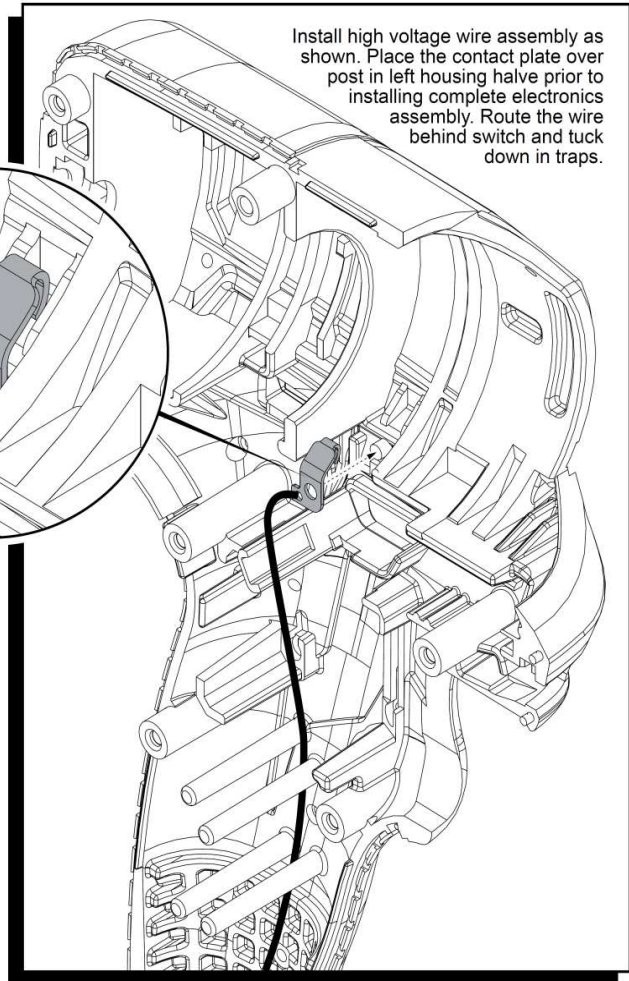
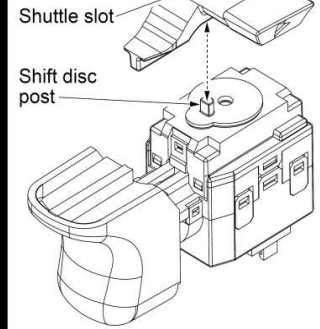
Mar-20

Starting Serial Number:

VERSION A - E2016



Be sure post in shift disc of switch is inserted into slot of fwd./rev. shuttle when installing electronics assembly. Check for proper functionality prior to screwing handle halves together.



AS AN AID TO REASSEMBLY, TAKE NOTICE OF WIRE ROUTING AND POSITION IN WIRE GUIDES AND TRAPS WHILE DISMANTLING TOOL.

BE SURE THAT ALL COMPONENTS OF THE ELECTRONICS KIT ARE SEATED FIRMLY AND SQUARELY IN THE HANDLE RECESSES.

AVOID PINCHED WIRES, BE SURE THAT ALL WIRES AND SLEEVES ARE PRESSED COMPLETELY DOWN IN WIRE GUIDES AND TRAPS.

PRIOR TO INSTALLING THE HANDLE COVER ONTO THE HANDLE SUPPORT, BE SURE THAT THERE ARE NO INTERFERENCES.