



M18 CBLID

SERVICE PARTS DIAGRAM

TTI Model Number: 018 293 024

M18™ COMPACT BRUSHLESS IMPACT DRIVER

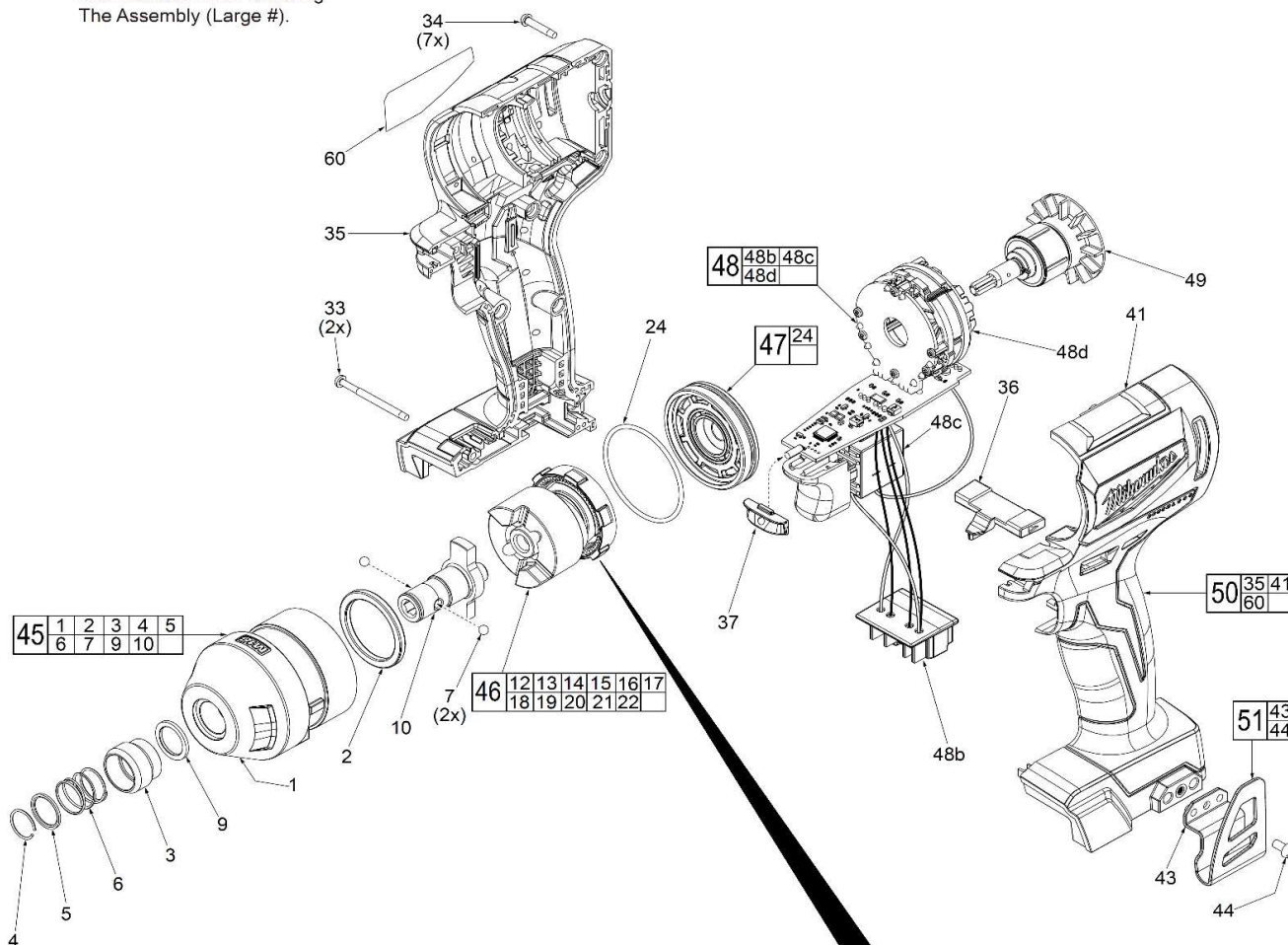
Bulletin Date:

Feb-20

Starting Serial Number:

VERSION A - A2019

EXAMPLE:
 00 0 Component Parts (Small #)
 Are Included When Ordering
 The Assembly (Large #).



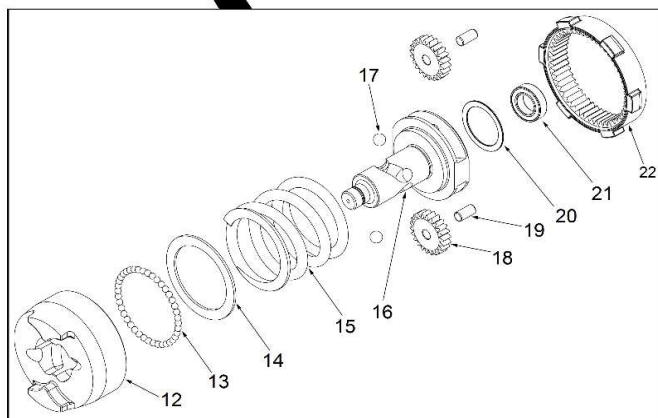
NOTE: Inside diameter of Washer (5) has a chamfer that is to face outside towards Retaining Ring (4).

FIG. LUBRICATION

Use Type 'J' Grease, Item 1200 (454g)

Service grease may not be compatible with grease used during manufacturing. 90-95% of the old grease must be removed prior to any new grease being added.

- 10 Lightly coat front washer surface of anvil with grease, place a dab in the ball cavities of anvil.
- 45 Coat inside of bushing inside front gearcase with grease.
- 46 **NOTE:** Do not wash impact assembly. Use a clean, dry cloth to wipe away any excess grease or contamination.
- 46 Lightly coat the I.D. of the ring gear and the center of the planet gears of impacting assembly with grease.
- 49 Coat pinion of rotor assembly with grease.



61



1200

	M18 CBLID SERVICE PARTS LIST	Bulletin Date: Feb-20
	TTI Model Number: 018 293 024 M18™ COMPACT BRUSHLESS IMPACT DRIVER	Starting Serial Number: VERSION A - A2019

ITEM	PART NUMBER	PART DESCRIPTION	QTY (PCS)
1	313385001	FRONT GEAR CASE	1
2	523732003	WASHER	1
3	694529001	SLEEVE	1
4	690258004	RETAINING RING	1
5	690266002	WASHER	1
6	690261003	SPRING	1
7	670220001	STEEL BALL	2
9	680335101	WASHER	1
10	621352211	ANVIL	1
12	693116059	HAMMER	1
13	670221001	3.0MM STEEL BALL	30
14	680335117	WASHER	1
15	693164062	SPRING	1
16	621338067	CAM SHAFT	1
17	680015001	3/16" STEEL BALL	2
18	611575029	PLANET GEAR	2
19	671565003	PLANET GEAR PIN	2
20	690426002	WASHER	1
21	681949004	BALL BEARING	1
22	611574031	RING GEAR	1
24	564624002	O-RING	1
33	662492001	M3 X 38MM SCREW	2
34	662456001	M3 X 16MM SCREW	7
35	-	RIGHT HANDLE HALVE - COVER	1
36	534502001	SHUTTLE	1
37	534501001	LED LENS	1
41	-	LEFT HANDLE HALVE - SUPPORT	1
43	634138001	BELT CLIP	1
44	661082003	6-32 X 5/16 SCREW	1
45	208445002	GEARCASE/ANVIL ASSEMBLY	1
46	208447002	GEAR BOX IMPACTING ASSEMBLY	1
47	208448001	END CAP ASSEMBLY	1
48	208449001	ELECTRONICS ASSEMBLY	1
48b	-	BATTERY TERMINAL CONNECTOR BLOCK	1
48c	-	ON-OFF SWITCH	1
48d	-	STATOR/MAIN PCBA	1

	M18 CBLID SERVICE PARTS LIST	Bulletin Date: Feb-20
	TTI Model Number: 018 293 024 M18™ COMPACT BRUSHLESS IMPACT DRIVER	Starting Serial Number: VERSION A - A2019

ITEM	PART NUMBER	PART DESCRIPTION	QTY (PCS)
49	208451001	ROTOR ASSEMBLY	1
50	204893003	HANDLE HOUSING KIT	1
51	204897001	BELT CLIP KIT	1
60	940946914	RATING LABEL	1
61	204892003	CARRYING CASE	1
62	941300102	WARNING LABEL (NOT SHOWN)	1
1200	-	TYPE J GREASE	1



M18 CBLID

SERVICE INSTRUCTION

TTI Model Number: 018 293 024

M18™ COMPACT BRUSHLESS IMPACT DRIVER

Bulletin Date:

Feb-20

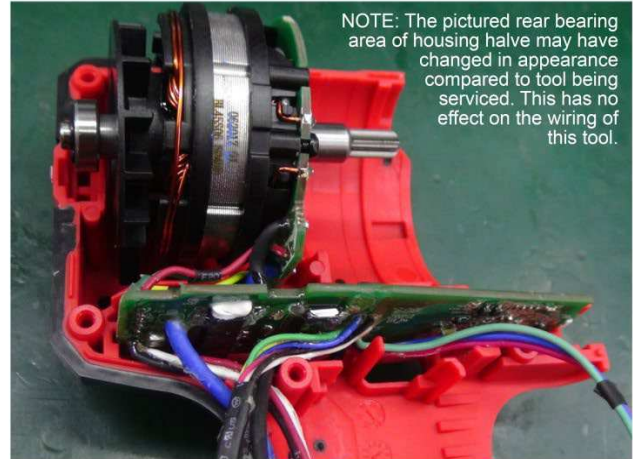
Starting Serial Number:

VERSION A - A2019

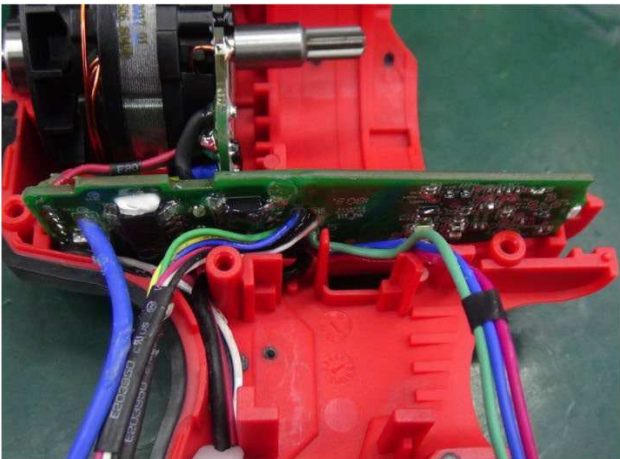
WIRING INSTRUCTIONS- one of two



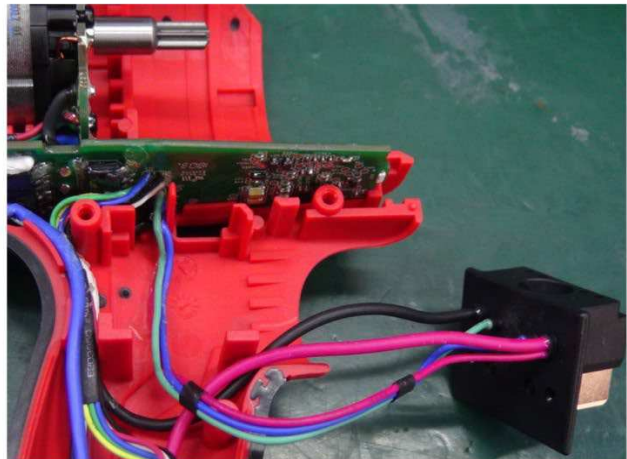
STEP 1: Carefully insert rotor into stator. Arrange wires as shown above.



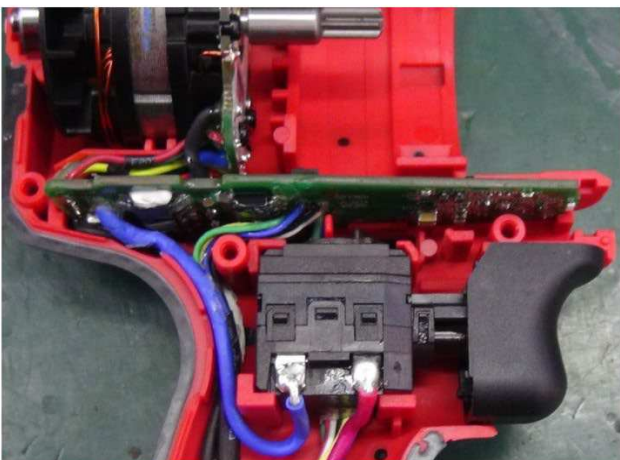
STEP 2: Place rotor/stator and PCBA firmly and squarely in cavities of left housing half. Arrange wires as shown above.



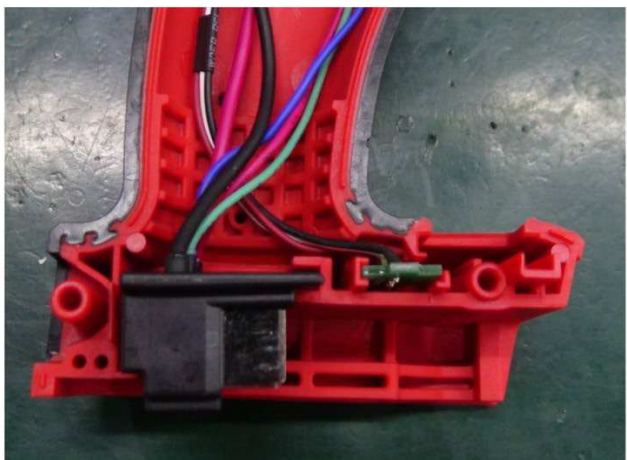
STEP 3: Separate and organize wires as shown above. place three hall sensor wires in bottom of housing half switch cavity. Place black battery terminal wire over those



STEP 4: Route remaining wires as shown, over the wires from step 3 behind the switch cavity and through the bottom of switch cavity prior to installing on-off switch.



STEP 5: Place on-off switch firmly and squarely in cavity of left housing half. Be sure all previously placed wires are still captured in properly in wire traps and channels.



STEP 6: Place battery terminal block and squarely in cavity of left housing half.



M18 CBLID

SERVICE INSTRUCTION

TTI Model Number: 018 293 024

M18™ COMPACT BRUSHLESS IMPACT DRIVER

Bulletin Date:

Feb-20

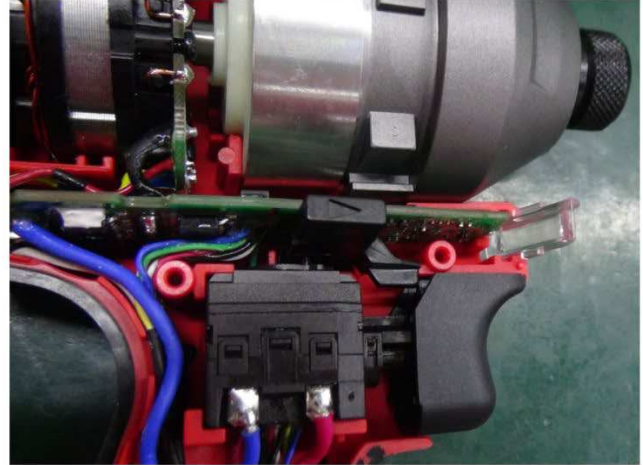
Starting Serial Number:

VERSION A - A2019

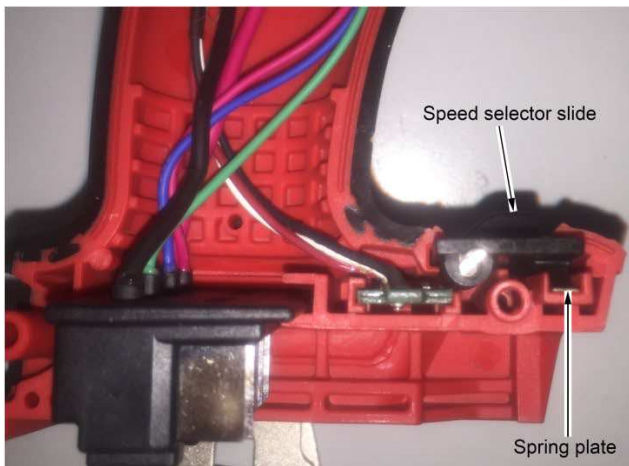
WIRING INSTRUCTIONS- two of two



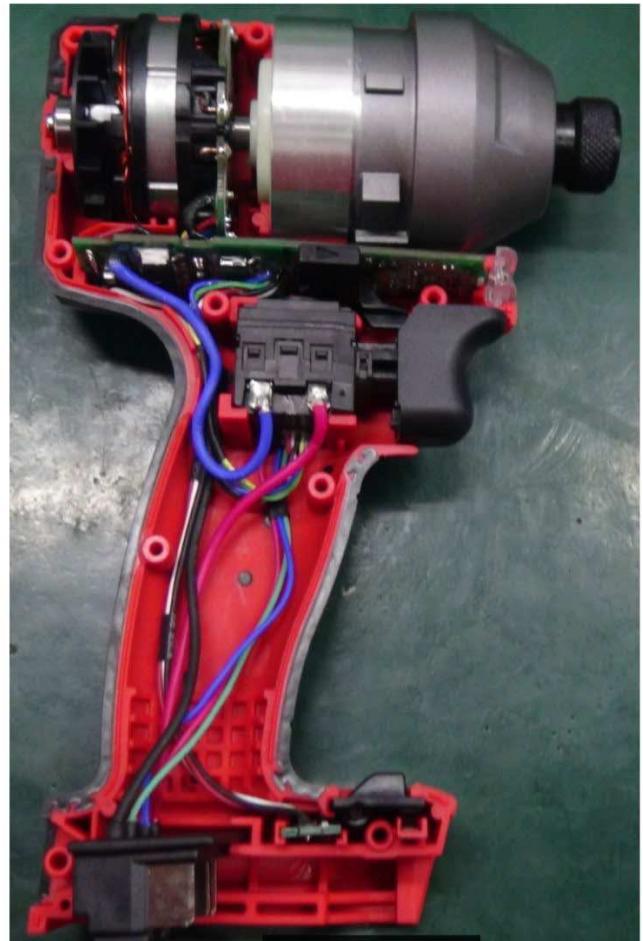
STEP 7: Assemble gear box/impact assembly onto rotor pinion. Be sure gear box, rotor and stator are firmly and squarely seated in left housing half and that the rotor fan has movement.



STEP 8: Install shuttle onto on-off switch being sure that top switch tab is captured in the bottom cavity of shuttle. Check for proper shuttle and switch functionality. Install LED lens into housing half recess.



STEP 9: Install spring plate and speed selector slide into left housing half.



STEP 10: Check that all elements of electronics assembly are seated properly and that all wires are pressed completely down in wire traps and channels.

Carefully install right housing half-cover onto left housing half-support. Watch for pinched wires. Secure with nine housing half screws.

Check functionality of shuttle and on-off switch before installing battery.