



M18 CHT

SERVICE PARTS DIAGRAM

TTI Model Number: 018 208 004DG9, 007DG9, 008DG9

M18™ FUEL HEDGE TRIMMER

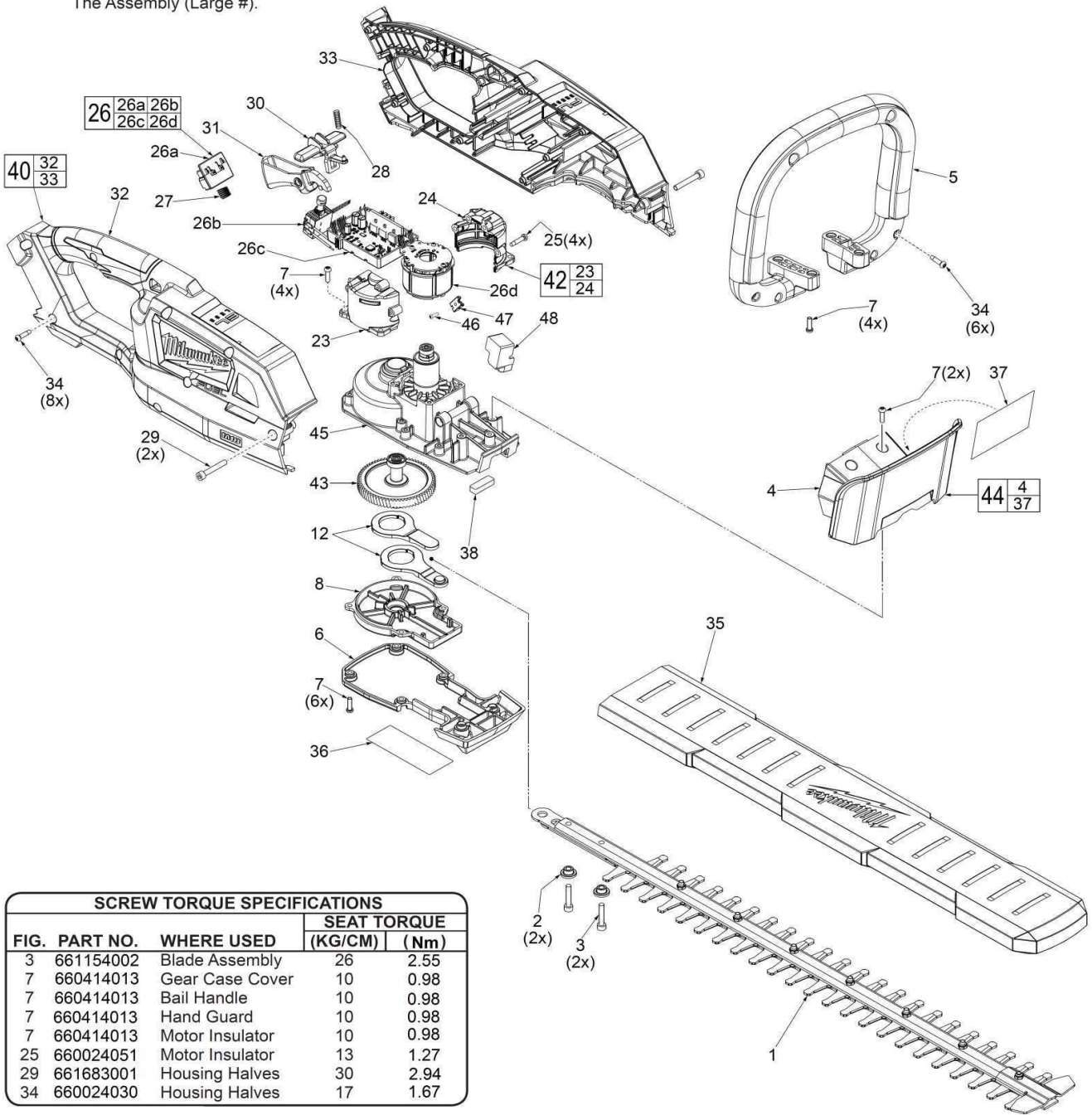
Bulletin Date:

Feb-20

Starting Serial Number:

VERSION A - E2017

EXAMPLE:
 Component Parts (Small #)
 Are Included When Ordering
 The Assembly (Large #).



SCREW TORQUE SPECIFICATIONS				
FIG.	PART NO.	WHERE USED	SEAT TORQUE	
			(KG/CM)	(Nm)
3	661154002	Blade Assembly	26	2.55
7	660414013	Gear Case Cover	10	0.98
7	660414013	Bail Handle	10	0.98
7	660414013	Hand Guard	10	0.98
7	660414013	Motor Insulator	10	0.98
25	660024051	Motor Insulator	13	1.27
29	661683001	Housing Halves	30	2.94
34	660024030	Housing Halves	17	1.67





M18 CHT

SERVICE PARTS LIST

TTI Model Number: 018 208 004DG9, 007DG9, 008DG9

M18™ FUEL HEDGE TRIMMER

Bulletin Date:

Feb-20

Starting Serial Number:

VERSION A - E2017

ITEM	PART NUMBER	PART DESCRIPTION	QTY (PCS)
1	208106003	24" BLADE ASSEMBLY	1
2	613034001	BUSHING	2
3	661154002	M5 X 0.8" SCREW	2
4	531361001	HAND GUARD	1
5	204511001	BAIL HANDLE ASSEMBLY WITH MICRO SWITCH	1
6	531463002	GEAR CASE COVER	1
7	660414013	M4 X 0.7" SCREW	16
8	642760001	GEAR COVER	1
12	613008001	CONNECTING PLATE	2
23	-	RIGHT MOTOR HOUSING INSULATOR - SUPPORT	1
24	-	LEFT MOTOR HOUSING INSULATOR - COVER	1
25	660024051	M4 X 1.4" SCREW	4
26	208106005	ELECTRONIC ASSEMBLY	1
26a	-	BATTERY CONNECTOR BLOCK ASSEMBLY	1
26b	-	SWITCH ASSEMBLY	1
26c	-	PCBA	1
26d	-	STATOR ASSEMBLY	1
28	692528001	LOCK-OFF SPRING	1
29	661683001	M5 X 0.8" SCREW	2
30	531359001	LOCK-OFF BUTTON	1
31	531358001	SWITCH TRIGGER	1
32	-	RIGHT HOUSING ASSEMBLY - COVER	1
33	-	LEFT HOUSING ASSEMBLY - SUPPORT	1
34	660024030	M4 X 1.4" SCREW	14
35	531408001	BLADE SHEATH	1
36	941048106	SERVICE NAMEPLATE	1
37	940221413	CAUTION LABEL	1
38	903208001	FELT SEAL	1
40	203208004	HOUSING KIT	1
42	203097001	MOTOR INSULATOR KIT	1
43	203208002	GEAR / CRANK SHAFT ASSEMBLY	1
44	203208006	HAND GUARD KIT	1
45	208106004	GEAR CASE / ROTOR ASSEMBLY	1
46	661398002	M2.6 X 8MM SCREW	3
47	591714001	WIRE FIXED COVER	1
48	591713001	WIRE COVER	1
1200	-	TYPE Y GREASE	1



M18 CHT

SERVICE INSTRUCTION

TTI Model Number: 018 208 004DG9, 007DG9, 008DG9

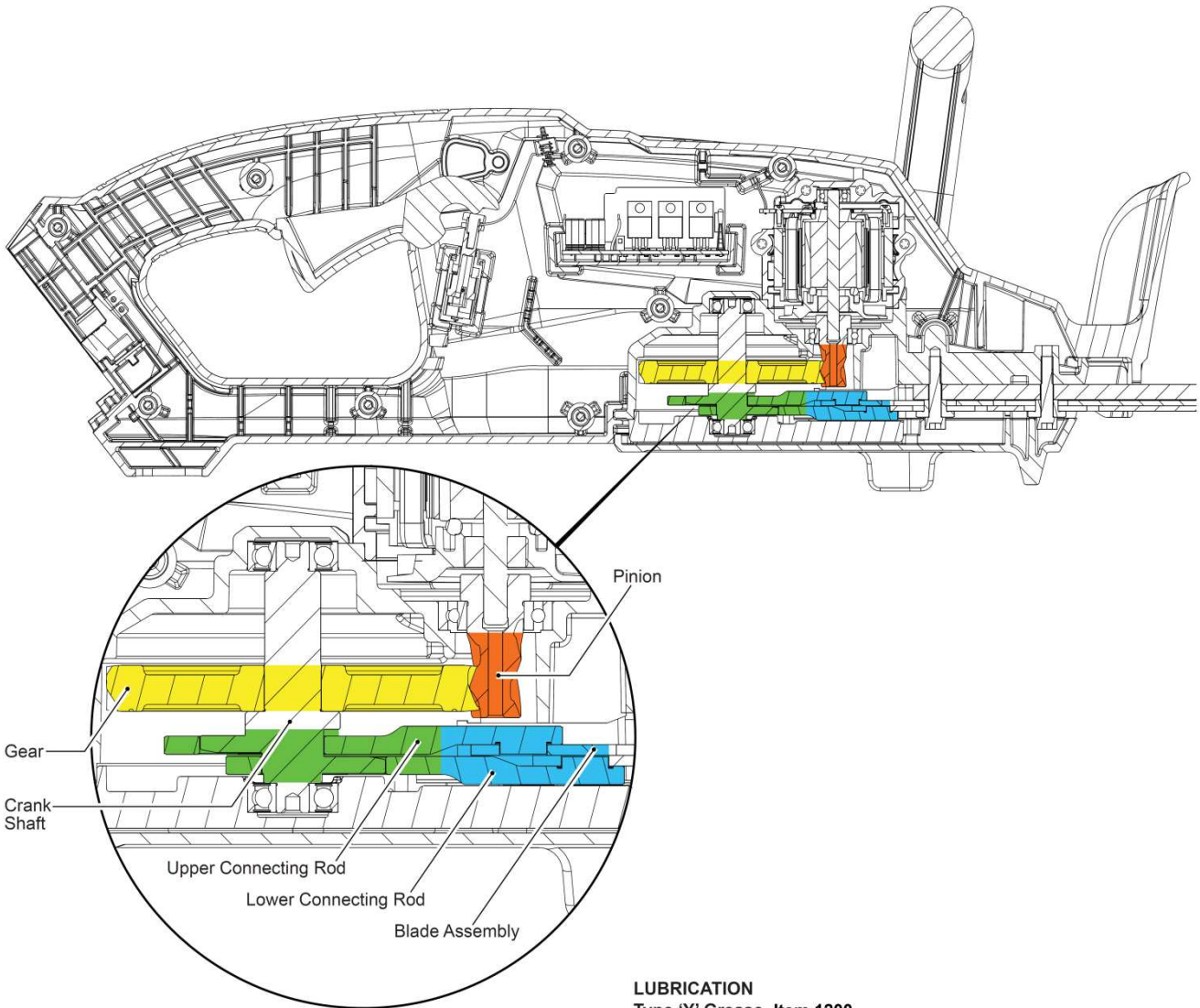
M18™ FUEL HEDGE TRIMMER

Bulletin Date:

Feb-20

Starting Serial Number:

VERSION A - E2017







LUBRICATION

Type 'Y' Grease, Item 1200

NOTE:

When servicing the tool, 90-95% of the old grease must be removed prior to new grease being added.

-  Apply a heavy coat of grease around the perimeter of the gear, being sure to cover all gear teeth (approx. 3 grams).
-  Apply a heavy coat of grease to the motor pinion, being sure to cover all the pinion teeth (approximately 3 grams).
-  Apply a thick film of grease to the entire connecting rod, including the walls of the ID, (2 pieces).
Apply a thick coat of grease to the corresponding contact area of the crank shaft (approximately 2 grams).
-  Apply a thick coat of grease to the blade assembly where there is contact with the connecting rods (approx. 2 grams).