



M18 BMS

SERVICE PARTS DIAGRAM

TTI Model Number: 018 118 036

M18™ METAL SHEAR

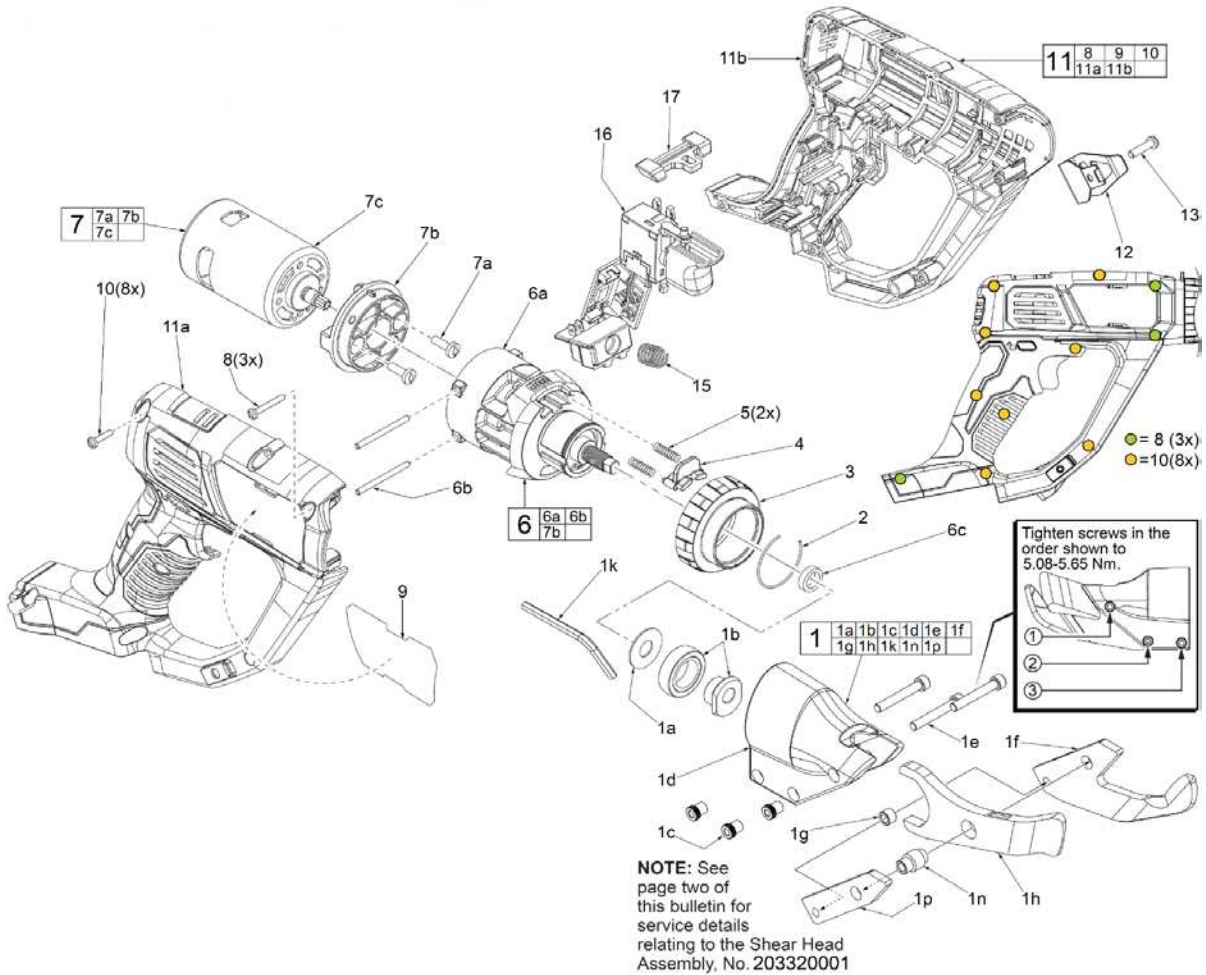
Bulletin Date:

May-20

Starting Serial Number:

VERSION A -

EXAMPLE:
Component Parts (Small #)
Are Included When Ordering
The Assembly (Large #).



- FIG. NOTES:**
- 1b,6a To remove the eccentric assembly (1b) from the output shaft of the gearcase (6a) a 1/4" open end wrench should be used to secure the end of the shaft. Use a thin walled 7/8" wrench to tighten/loosen the eccentric.
 - 2,3,4 When replacing Rotational Collar (3), remove 'C' Retaining Ring (2). Pull back Release Lever (4) while turning Rotational Collar (3) 90° in either direction, lining up the lugs in the Rotational Collar with the slots on the front of the Gearbox.
 - 3,4,5,6a Place a light film of Type 'E' Grease, No. 1200 to the inside diameter of the Rotational Collar (3), to the front neck of Gearbox (6a), to the underside of the Release Lever (4) and the two Release Lever Springs (5).
 - 6,7,7b Service replacement gearcase assembly (6) comes with a motor mount plate (7b) that must be removed and discarded when servicing. A motor mount plate already exists on the motor assembly (7).





M18 BMS

SERVICE PARTS LIST

TTI Model Number: 018 118 036

M18™ METAL SHEAR

Bulletin Date:

May-20

Starting Serial Number:

VERSION A -

ITEM	PART NUMBER	PART DESCRIPTION	QTY (PCS)
1	203320001	SHEAR HEAD ASSY	1
1a	632525002	WASHER	1
1b	-	ECCENTRIC ASSEMBLY	1
1c	660597004	KNURLED INSERT	3
1d	642141005	SHEAR HOUSING	1
1e	662143002	10-32 X 1-1/4" SKT. HD. CAP SCREW	3
1f	681837002	SIDE KNIFE	1
1g	694563002	BUSHING	1
1h	681836002	BLADE - CENTER	1
1k	691255006	5/32" HEX ALLEN WRENCH	1
1n	694562002	SPACER BUSHING	1
1p	681838002	SIDE SPACER	1
2	694066001	C' RETAINING RING	1
3	642415001	ROTATIONAL COLLAR	1
4	642400001	ROTATIONAL HEAD RELEASE LEVER	1
5	694499001	SPRING	2
6	203197001	GEARBOX ASSEMBLY	1
6a	-	GEARBOX	1
6b	-	2.5MM X 47MM STEEL PIN	2
6c	634335007	WASHER (SPACER)	1
7	203041002	MOTOR ASSEMBLY	1
7a	-	M5.0 X 12MM SCREW	2
7b	-	MOTOR MOUNT PLATE	1
7c	-	MOTOR	1
8	660837003	M3.0 X 22.5MM PAN HD. ST T-10 SCREW	3
9	941050347	RATING LABEL	1
10	660851001	M3.0 X 16MM PAN HD. ST T-10 SCREW	8
11	203042002	HANDLE HOUSING ASSEMBLY	1
11a	-	HANDLE HALVE - RIGHT (COVER)	1
11b	-	HANDLE HALVE - LEFT (SUPPORT)	1
12	635042001	BELT CLIP	1
13	660284008	6-32 X .75" PAN HD. PHILLIPS MACHINE SCREW	1
15	691093001	COMPRESSION SPRING	1
16	203044001	ELECTRONICS ASSEMBLY	1
17	526710001	LOCK-OFF SHUTTLE	1



M18 BMS

SERVICE INSTRUCTION

TTI Model Number: 018 118 036

M18™ METAL SHEAR

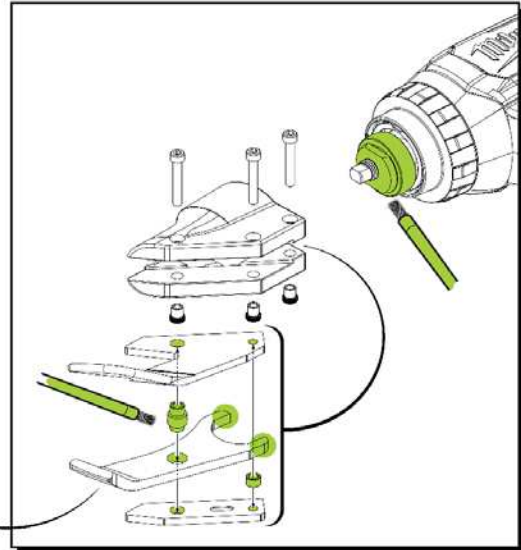
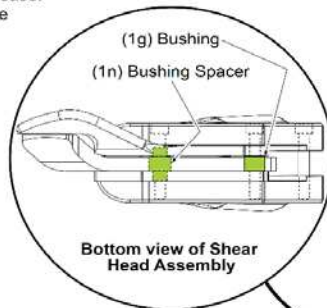
Bulletin Date:

May-20

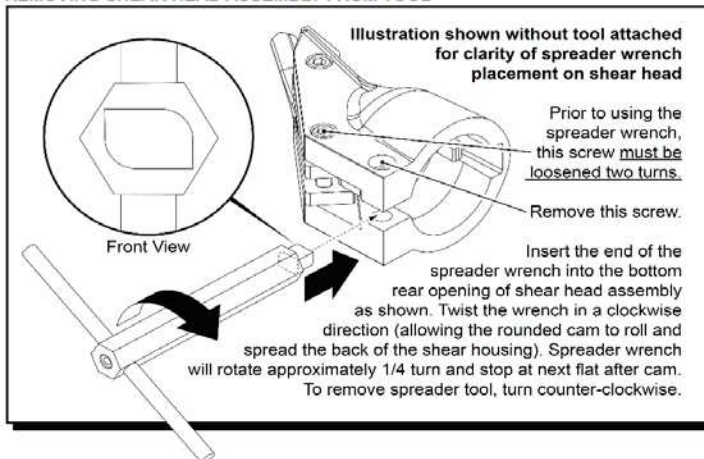
Starting Serial Number:

VERSION A -

When servicing **Shear Head Assembly No. 203320001** pay close attention to the placement of the Bushings. One is to be placed in the hole of the Center Blade and the front most holes of the Side Knife and the Side Spacer. It is to be held in place with the front most screw on the Shear Housing. The other bushing is to be located below and behind the Center Blade and is to be secured with the middle screw on the Shear Housing. Prior to assembly, it is recommended to use Type 'E' Grease, No. 1200 on the following areas: Place a dab of grease in the pivot (bushing) hole and on the bushing notch of the Center Blade. Place a dab of grease on the rear flats of the Center Blade. Coat both bushings completely with grease. Place a liberal amount of grease on the entire Eccentric Assembly.



REMOVING SHEAR HEAD ASSEMBLY FROM TOOL



SERVICE TOOLS:

Spreader Wrench No. 61-30-0300
for 14 Gauge Shear Head 48-08-0505
used on Shear No. 2636-20

for 18 Gauge Shear Head 48-08-0507
used on Shear 2637-20

Spreader Wrench No. 61-30-0310
for 18 Gauge Shear Head 48-08-0500
used on Shears 2635-20, 6850 and 6852-20



M18 BMS

SERVICE INSTRUCTION

TTI Model Number: 018 118 036

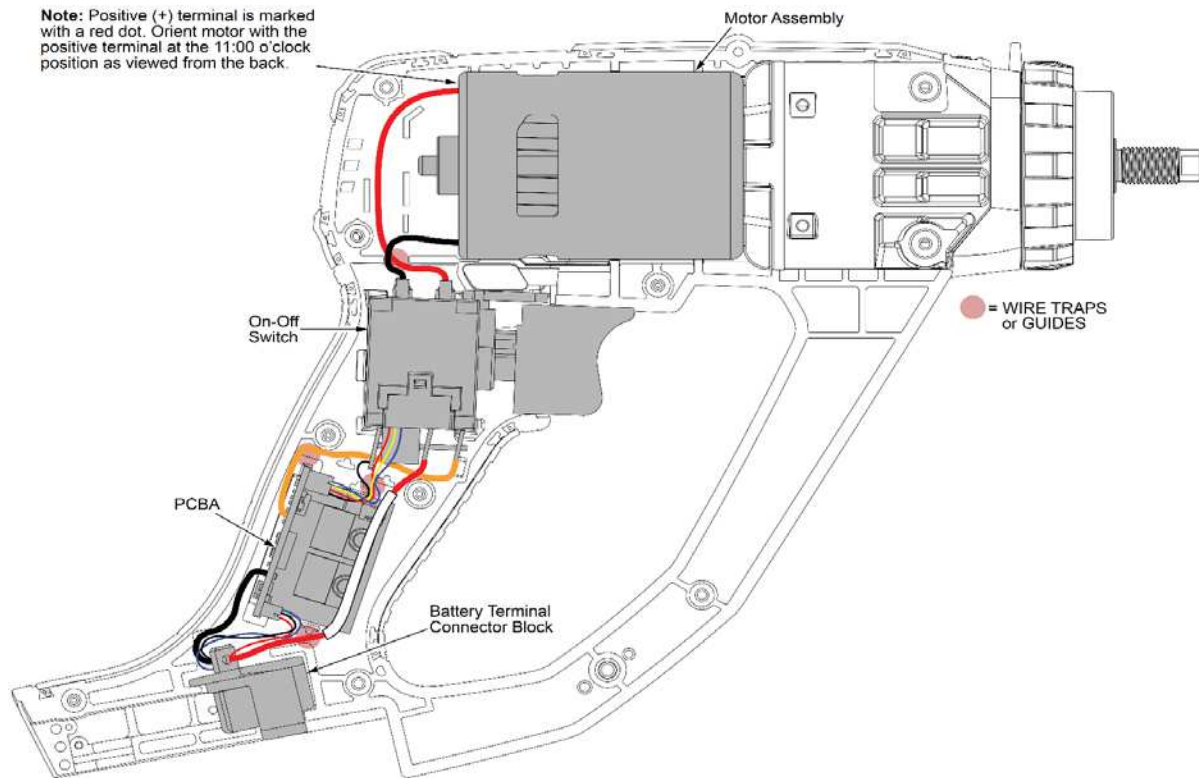
M18™ METAL SHEAR

Bulletin Date:

May-20

Starting Serial Number:

VERSION A -



AS AN AID TO REASSEMBLY, TAKE NOTICE OF WIRE ROUTING AND POSITION IN WIRE GUIDES AND TRAPS WHILE DISMANTLING TOOL.

BE SURE THAT ALL COMPONENTS OF THE ELECTRONICS KIT ARE SEATED FIRMLY AND SQUARELY IN THE HANDLE RECESSES.

AVOID PINCHED WIRES, BE SURE THAT ALL WIRES AND SLEEVES ARE PRESSED COMPLETELY DOWN IN WIRE GUIDES AND TRAPS.

PRIOR TO INSTALLING THE HANDLE COVER ONTO THE HANDLE SUPPORT, BE SURE THAT THERE ARE NO INTERFERENCES.