



M12 ONEFTR12

SERVICE PARTS DIAGRAM

TTI Model Number: 018 302 008, 011

M12 FUEL™ 1/2" DIGITAL TORQUE WRENCH

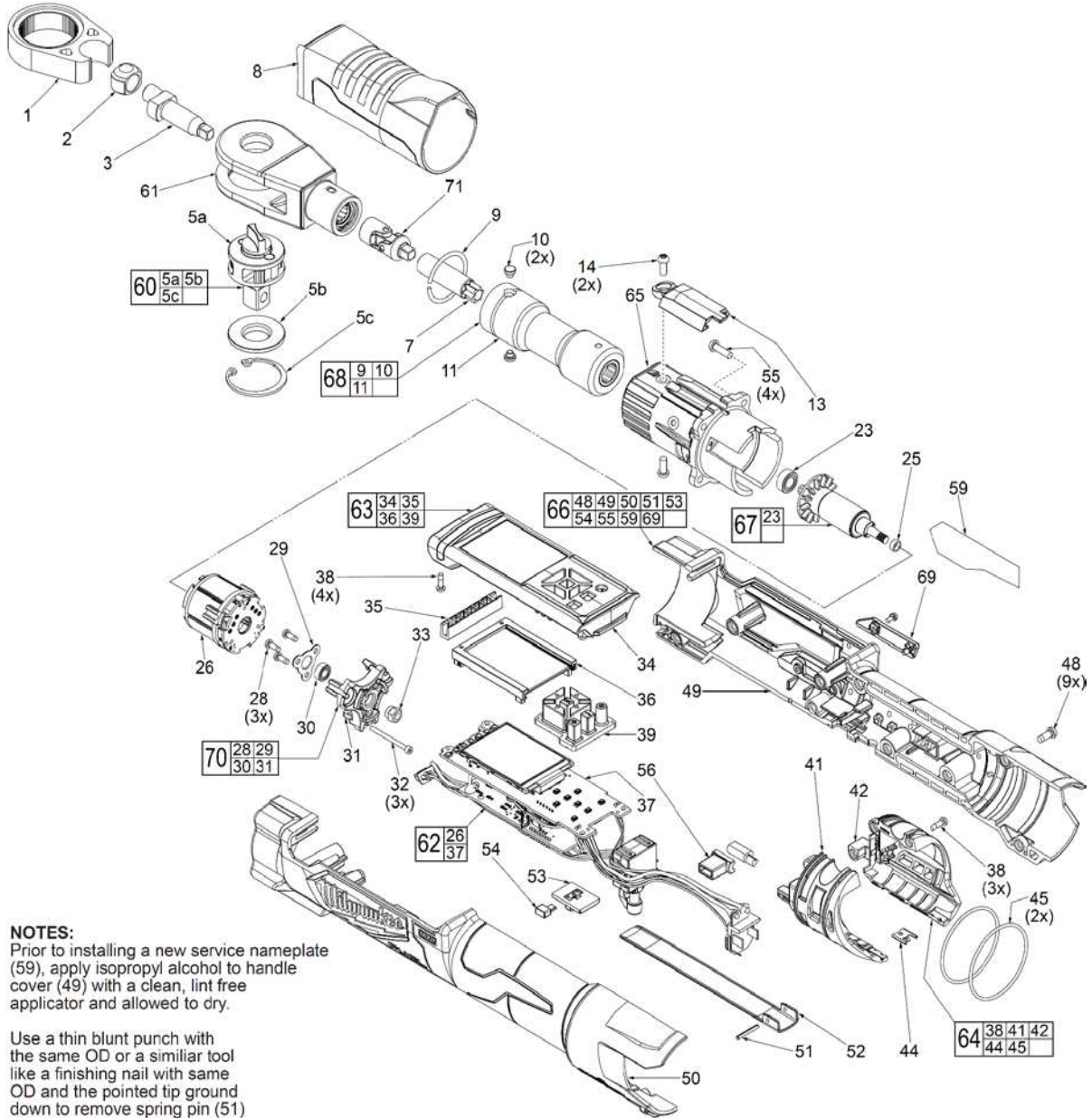
Bulletin Date:

Jun-20

Starting Serial Number:

VERSION A -

EXAMPLE:
Component Parts (Small #) Are Included
When Ordering The Assembly (Large #).



NOTES:
Prior to installing a new service nameplate (59), apply isopropyl alcohol to handle cover (49) with a clean, lint free applicator and allowed to dry.

Use a thin blunt punch with the same OD or a similar tool like a finishing nail with same OD and the pointed tip ground down to remove spring pin (51) from handle halves (49 and 50) and switch paddle (52). **As an aid, be sure to prop up that corner end of wrench to support the tapping out of spring pin.** When reinstalling pin, align the holes and carefully press or tap the pin in place.





M12 ONEFTR12

SERVICE PARTS LIST

TTI Model Number: 018 302 008, 011

M12 FUEL™ 1/2" DIGITAL TORQUE WRENCH

Bulletin Date:

Jun-20

Starting Serial Number:

VERSION A -

ITEM	PART NUMBER	PART DESCRIPTION	QTY (PCS)
1	697375001	1/2" YOKE	1
2	696922001	BUSHING	1
3	622429001	1/2" CRANKSHAFT-ESSENTIC END	1
5a	-	1/2" ANVIL SUBASSEMBLY	1
5b	697376001	FRICTION PLATE	1
5c	633524001	1/2" RETAINING RING	1
7	622397001	CRANKSHAFT-SPLINE END	1
8	564781001	RUBBER BOOT	1
9	697701001	'C' RETAINING RING	1
10	697700001	PIN	2
11	291936001	1/2" BEAM	1
13	536058001	GEAR BOX COVER	1
14	662400003	M4 X 10MM PAN HD. T-20 MACHINE SCREW	2
23	-	BALL BEARING	1
25	613326001	BUSHING	1
26	-	STATOR	1
28	661031003	M3 X 8MM PAN HD. TAPT. T-10 SCREW	3
29	637994001	BEARING PLATE	1
30	682158001	BALL BEARING	1
31	642931001	MOTOR PLATE	1
32	662573002	M2.5 X 31MM SOCKET CAP HD. SCREW	3
33	696054001	FLANGE NUT	1
34	314933001	TOP HOUSING ASSEMBLY	1
35	565047001	LIGHT PIPE COVER	1
36	564742001	SCREEN HOLDER	1
37	-	PCBA	1
38	660230011	M3 X 10MM PAN HD. ST T-10 SCREW	7
39	564741001	RUBBER BUTTON PAD	1
41	534938001	INSERT BASE	1
42	534939001	INSERT COVER	1
44	631542003	HOUSING CONNECTOR CLIP	1
45	570699001	O-RING	2
48	660165015	M3 SCREW	9
49	-	HOUSING COVER-RIGHT	1
50	-	HOUSING SUPPORT-LEFT	1



M12 ONEFTR12

SERVICE PARTS LIST

TTI Model Number: 018 302 008, 011

M12 FUEL™ 1/2" DIGITAL TORQUE WRENCH

Bulletin Date:

Jun-20

Starting Serial Number:

VERSION A -

ITEM	PART NUMBER	PART DESCRIPTION	QTY (PCS)
51	673021004	SPRING PIN	1
52	635588001	SWITCH PADDLE	1
53	532689001	SWITCH LOCK-OUT	1
54	536820001	INSERT RIB	1
55	662105002	M4 X14MM PAN HD. T-20 MACHINE SCREW	4
56	564820001	MOTOR SLEEVE	1
59	941122885	RATING LABEL 018302008 VERSION	1
59	941123027	RATING LABEL 018302011 VERSION	1
60	204522005	1/2" ANVIL ASSEMBLY	1
61	208308011	1/2" YOKE ASSEMBLY	1
62	208497001	ELECTRONICS ASSEMBLY	1
63	208538001	TOP HOUSING ASSEMBLY	1
64	203725003	INSERT ASSEMBLY	1
65	208536001	GEARCASE ASSEMBLY	1
66	204525014	HANDLE HOUSING KIT 018302008 VERSION	1
66	204525017	HANDLE HOUSING KIT 018302011 VERSION	1
67	208302002	ROTOR ASSEMBLY (SHARE WITH 3/8 RATCHET ASSY)	1
68	208539001	1/2" BEAM ASSEMBLY	1
69	201967005	DOOR KIT	1
70	203721004	MOTOR PLATE ASSEMBLY	1
71	201980004	U' JOINT ASSEMBLY	1
72	313911001	BLOW MOLDED CASE	1
1200	-	TYPE E GREASE	1



M12 ONEFTR12

SERVICE INSTRUCTION

TTI Model Number: 018 302 008, 011

M12 FUEL™ 1/2" DIGITAL TORQUE WRENCH

Bulletin Date:

Jun-20

Starting Serial Number:

VERSION A -

AS AN AID TO REASSEMBLY, TAKE NOTICE OF WIRE ROUTING AND POSITION IN WIRE GUIDES AND TRAPS WHILE DISMANTLING TOOL.

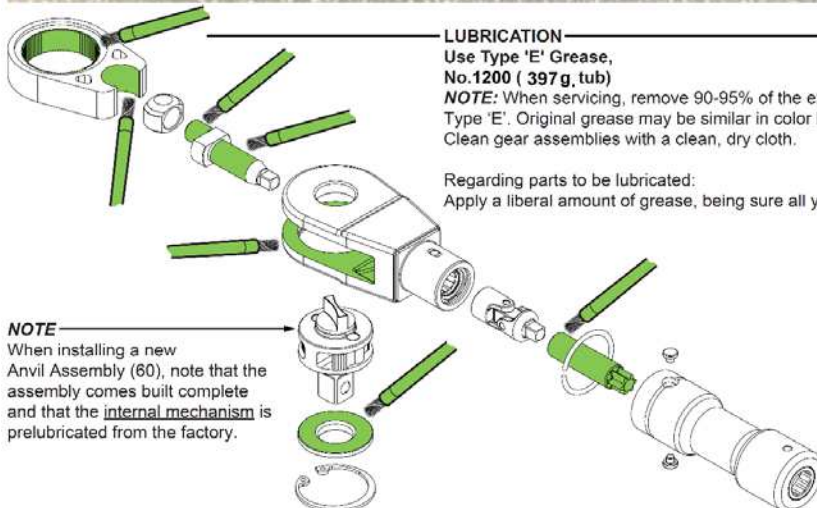
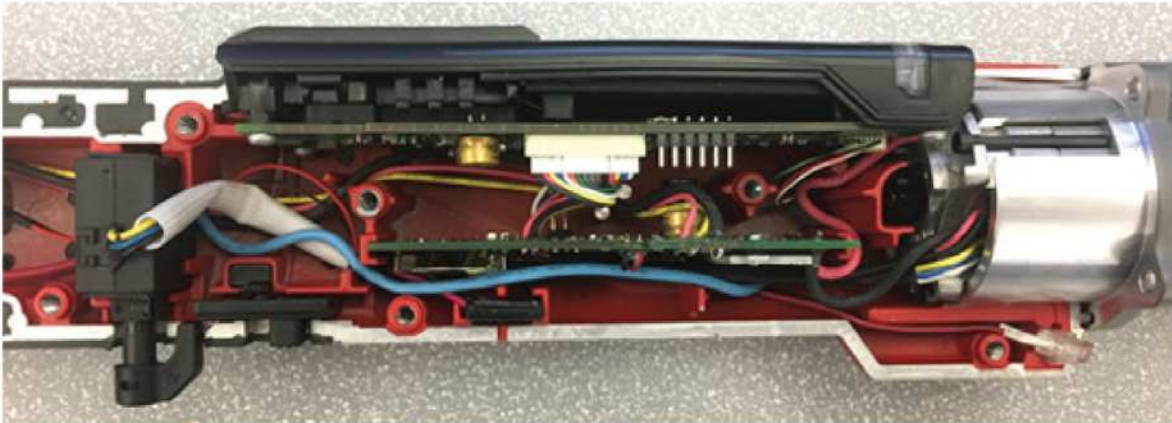
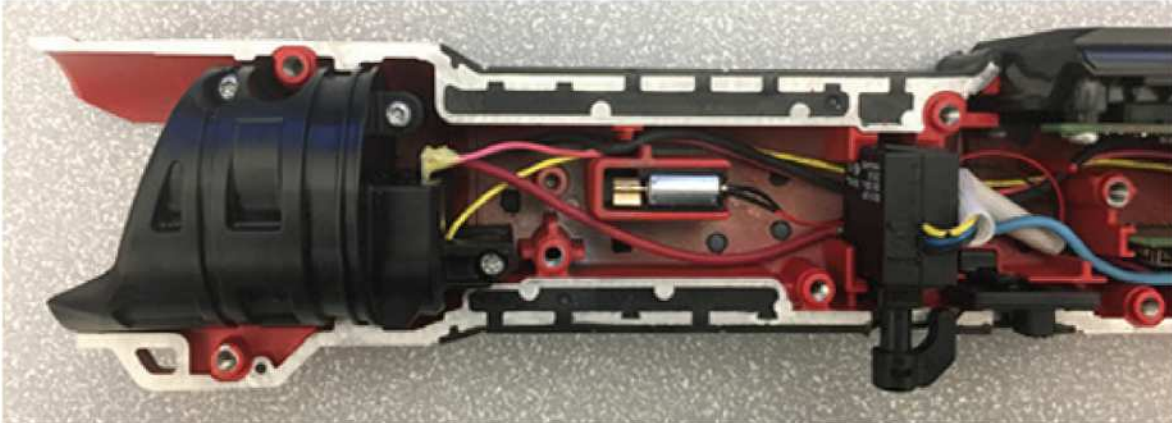
BE SURE THAT ALL COMPONENTS OF THE ELECTRONICS KIT ARE SEATED FIRMLY AND SQUARELY IN THE HANDLE RECESSES.

AVOID PINCHED WIRES, BE SURE THAT ALL WIRES AND SLEEVES ARE PRESSED COMPLETELY DOWN IN WIRE GUIDES AND TRAPS.

PRIOR TO SECURING THE HANDLE COVER ONTO THE HANDLE SUPPORT, BE SURE THAT THERE ARE NO INTERFERENCES.

BEFORE INSTALLING THE BATTERY, CHECK FOR PROPER FUNCTIONALITY OF SHUTTLE AND TRIGGERS.

INSTALL BATTERY AND DEPRESS SWITCH TRIGGER TO ASSURE TOOL IS OPERATING PROPERLY.



LUBRICATION

Use Type 'E' Grease,
No.1200 (397 g, tub)

NOTE: When servicing, remove 90-95% of the existing grease prior to installing Type 'E'. Original grease may be similar in color but not compatible with 'E'. Clean gear assemblies with a clean, dry cloth.

Regarding parts to be lubricated:

Apply a liberal amount of grease, being sure all yoke teeth are coated.

NOTE

When installing a new Anvil Assembly (60), note that the assembly comes built complete and that the internal mechanism is prelubricated from the factory.