



# M12 FRA1WF12&38

SERVICE PARTS DIAGRAM

TTI Model Number: 018 423 012, 013, 014, 015

## M12 FUEL™ RIGHT ANGLE IMPACT WRENCH

Bulletin Date:

**Dec-20**

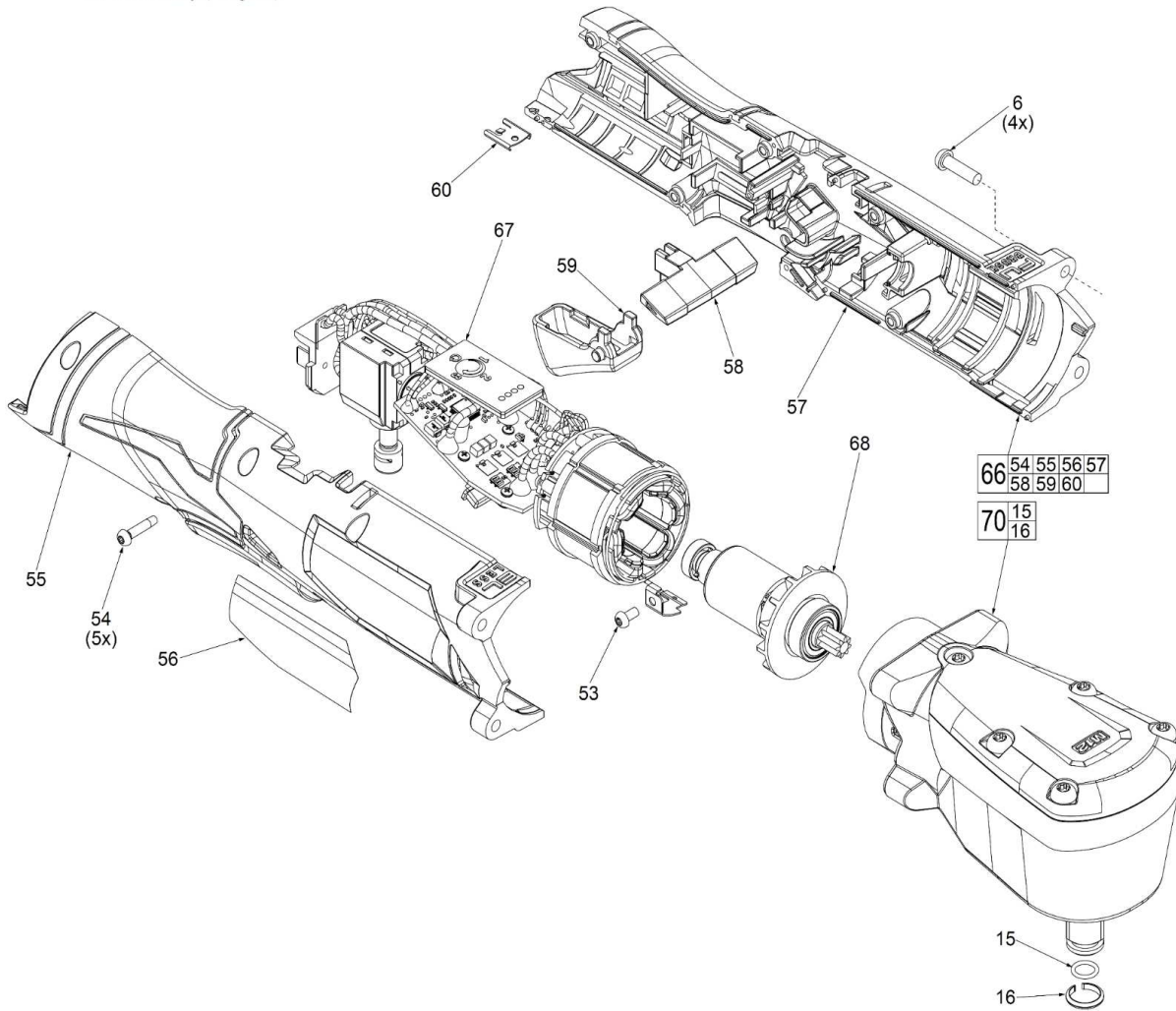
Starting Serial Number:

VERSION A - L2020

00 0

**EXAMPLE:**

Component Parts (Small #)  
Are Included When Ordering  
The Assembly (Large #).



**SCREW TORQUE SPECIFICATIONS**

FIG.	PART NO.	WHERE USED	SEAT TORQUE	
			(KG/CM)	( Nm )
6	661923001	Housing/Gearcase	21±1	2.03±0.1
53	660211067	Ground Plate	10±1	0.90±0.1
54	660570005	Housing Cover	10±1	0.90±0.1



# M12 FRAIWF12&38

SERVICE PARTS LIST

TTI Model Number: 018 423 012, 013, 014, 015

**M12 FUEL™ RIGHT ANGLE IMPACT WRENCH**

**Bulletin Date:**

**Dec-20**

**Starting Serial Number:**

**VERSION A - L2020**

ITEM	PART NUMBER	PART DESCRIPTION	QTY (PCS)
6	661923001	M4 X 15MM PAN HD. T-20 MACH. SCREW	4
15	570698001	O-RING	1
15	562980002	O-RING <i>018423014 ASIA VERSION</i>	1
16	691983001	FRICTION RING	1
16	693518002	FRICTION RING <i>018423014 ASIA VERSION</i>	1
53	660211067	M3 X 6MM PAN HD. T-10 MACH. SCREW	1
54	660570005	M3 X 14MM PAN HD. ST T-10 SCREW	5
55	-	HOUSING COVER	1
56	941050344	RATING LABEL <i>018423012, 014, 015 ASIA VERSION</i>	1
56	941050566	RATING LABEL <i>018423013 ONLY JP VERSION</i>	1
57	-	HOUSING SUPPORT	1
58	538713001	FORWARD/REVERSE SHUTTLE	1
59	538712001	ROCKER TRIGGER	1
60	631542003	HOUSING CONNECTION CLIP	1
66	204911014	HANDLE ASSEMBLY <i>018423012, 014, 015 ASIA VERSION</i>	1
66	204911016	HANDLE ASSEMBLY <i>018423013 ONLY JP VERSION</i>	1
67	208637002	PCBA AND MOTOR STATOR ASSEMBLY	1
68	208638001	MOTOR ROTOR & PINION ASSEMBLY <i>018423012, 014, 015 ASIA VERSION</i>	1
68	208638002	MOTOR ROTOR & PINION ASSEMBLY <i>018423013 ONLY JP VERSION</i>	1
70	208640001	GEARCASE ASSEMBLY	1
70	208639001	GEARCASE ASSEMBLY <i>018423014 ASIA VERSION</i>	1



# M12 FRAIWF12&38

SERVICE INSTRUCTION

TTI Model Number: 018 423 012, 013, 014, 015

## M12 FUEL™ RIGHT ANGLE IMPACT WRENCH

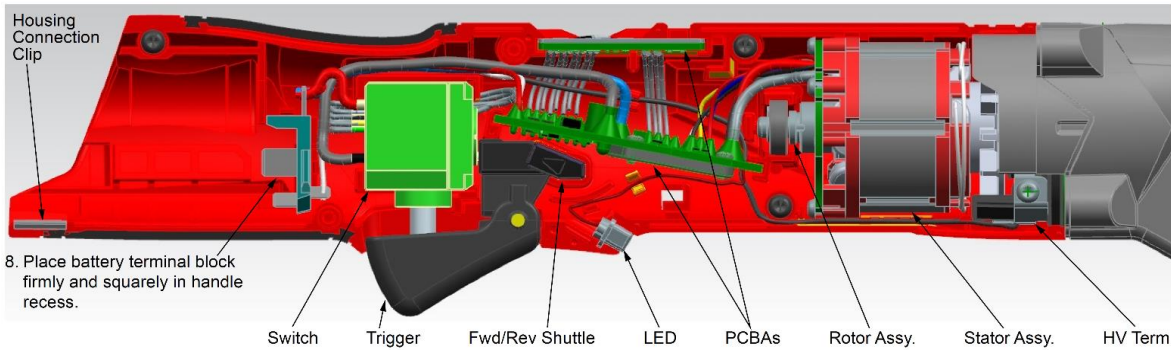
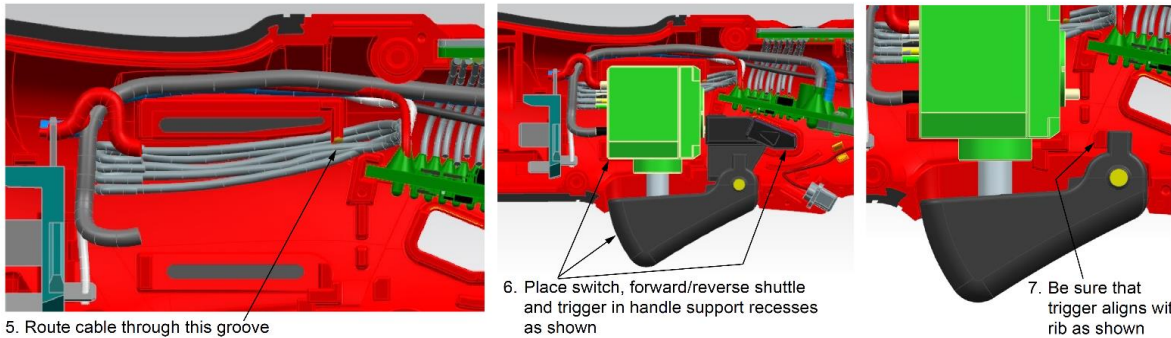
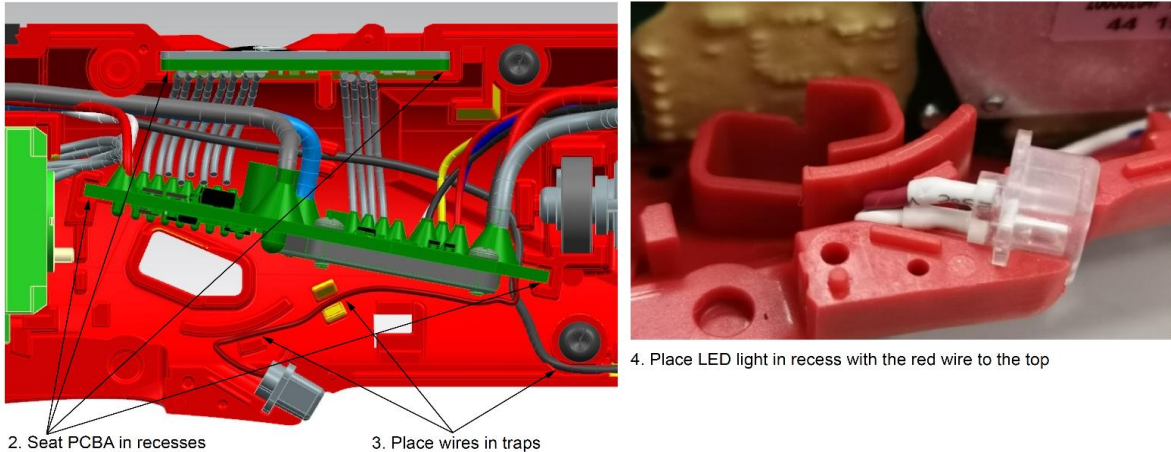
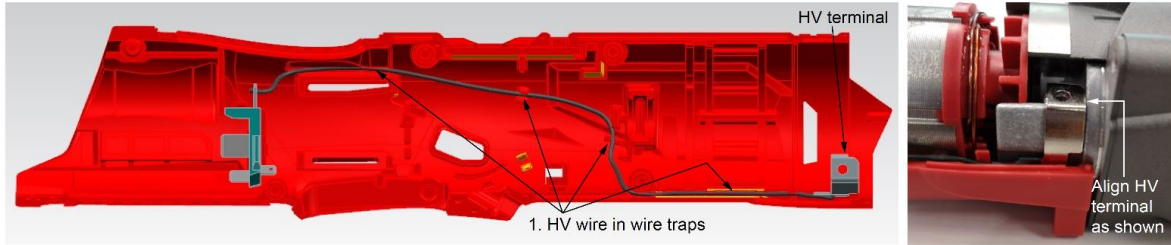
Bulletin Date:

**Dec-20**

Starting Serial Number:

**VERSION A - L2020**

### WIRING INSTRUCTIONS



Prior to installing the Housing Cover, be sure all elements of the Electronics Assembly are seated properly (Stator, Main PCBA, Selector PCBA, On-Off Switch, LED Assembly and Battery Terminal Block Connector). Be sure the Grounding Terminal is in place and that all wires are pressed down into all wire traps and channels. Check to assure that

wires will not interfere with moving parts. Prior to installing the Housing Cover, place Forward/Reverse Shuttle onto On-Off Switch and through Housing Support opening. Check to assure that wires will not be pinched. Secure the Housing Cover to the Housing Support with five M3 x 16mm ST T-10 Screws. Be sure to replace the Housing Clip at the bottom of the battery opening.