



M12 FMT

SERVICE PARTS DIAGRAM

TTI Model Number: 018 401 008

M12 FUEL™ MULTI TOOL

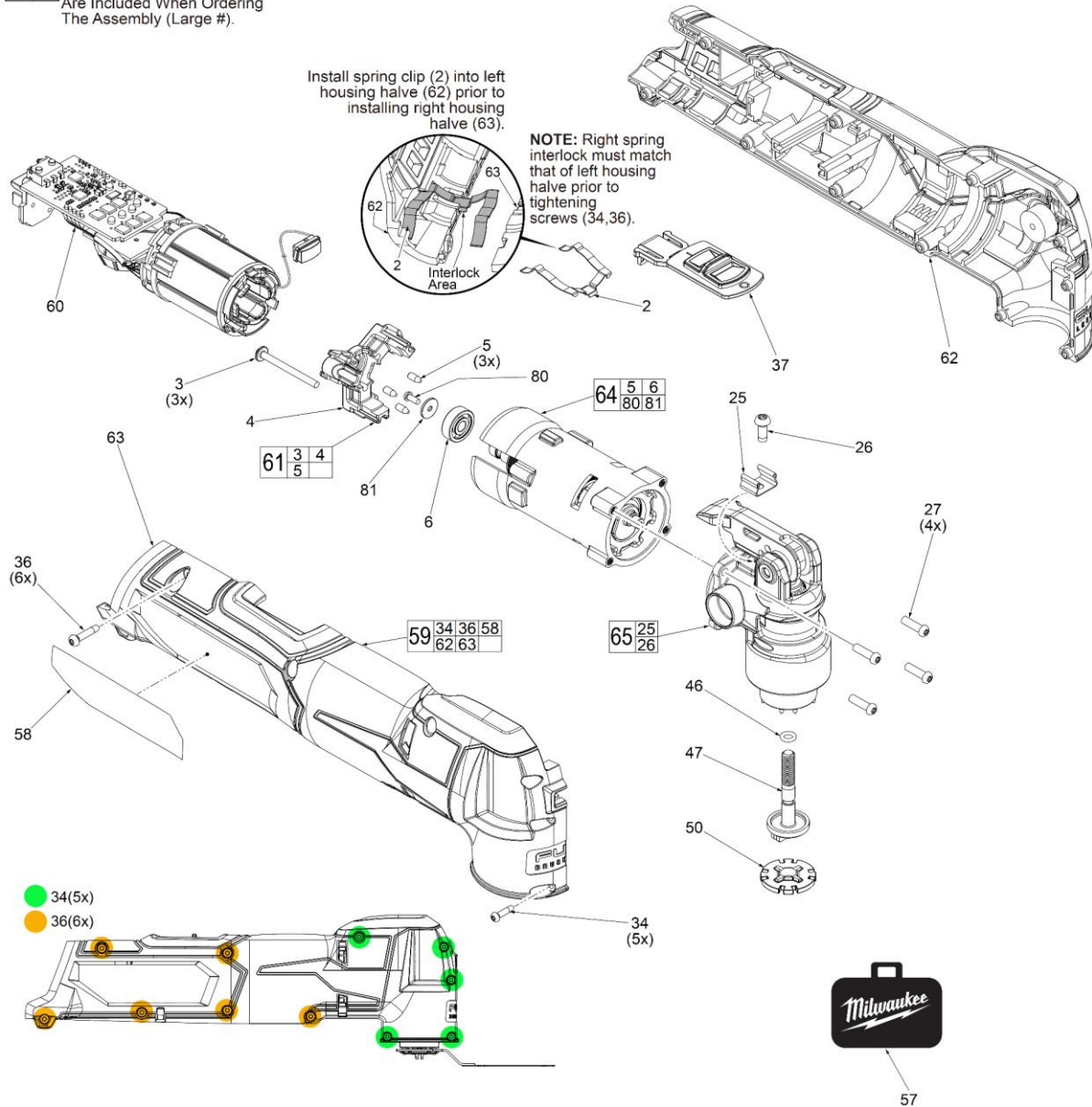
Bulletin Date:

Dec-20

Starting Serial Number:

VERSION A -

EXAMPLE:
Component Parts (Small #)
Are Included When Ordering
The Assembly (Large #).



Grease 1200



M12 FMT

SERVICE PARTS LIST

TTI Model Number: 018 401 008

M12 FUEL™ MULTI TOOL

Bulletin Date:

Dec-20

Starting Serial Number:

VERSION A -

ITEM	PART NUMBER	PART DESCRIPTION	QTY (PCS)
2	633680001	SPRING CLIP	1
3	-	M3 X 35MM PWH T-10 MACHINE SCREW	3
4	-	MOTOR END PLATE	1
5	565712001	RUBBER SLUG	3
6	681286004	BALL BEARING	1
25	634890001	QUICK RELEASE CLIP	1
26	660165015	M4 X 10MM PAN HD. TAPTITE T-20 SCREW	1
27	660320010	M3.5 X 12MM PAN HD. T-10 MACHINE SCREW	4
34	661081001	M2.6 X10MM PAN HD. ST T-8 SCREW	5
36	660570005	M3 X 14MM PAN HD. ST T-10 SCREW	6
37	360707003	SWITCH SLIDE	1
46	565326001	O-RING	1
47	622566001	BLADE FASTENER	1
50	614441001	ADAPTER	1
57	204401008	DYNA CASE ASSEMBLY	1
58	941123210	RATING LABEL	1
59	204401004	HOUSING KIT	1
60	208401006	ELECTRONICS ASSEMBLY	1
61	204401003	MOTOR END PLATE KIT	1
62	-	LEFT HOUSING KIT WITH CUSHIONS	1
63	-	RIGHT HOUSING KIT WITH CUSHIONS	1
64	208401007	MOTOR ASSEMBLY	1
65	208401008	GEARCASE ASSEMBLY	1
80	661703002	M2.5 X6MM PAN HD. PHILLIPS MACH. SCREW	1
81	659148001	FLAT WASHER	1
1200	-	TYPE J GREASE	1



M12 FMT

SERVICE INSTRUCTION

TTI Model Number: 018 401 008

M12 FUEL™ MULTI TOOL

Bulletin Date:

Dec-20

Starting Serial Number:

VERSION A -

LUBRICATION:

- = Type 'J' Grease (454g), Item 1200
- = 277 Red Loctite®

- ① = Fill back cavity of Gearcase (65) with approx. 3.5 grams of grease.
- ② = Place a few drops of thread locking sealant to threads of motor end plate screws (3).
- ③ = Place a few drops of thread locking sealant to threads of rear armature screw (80).
- ④ = Place a few drops of thread locking sealant to threads of gearcase screws (27).

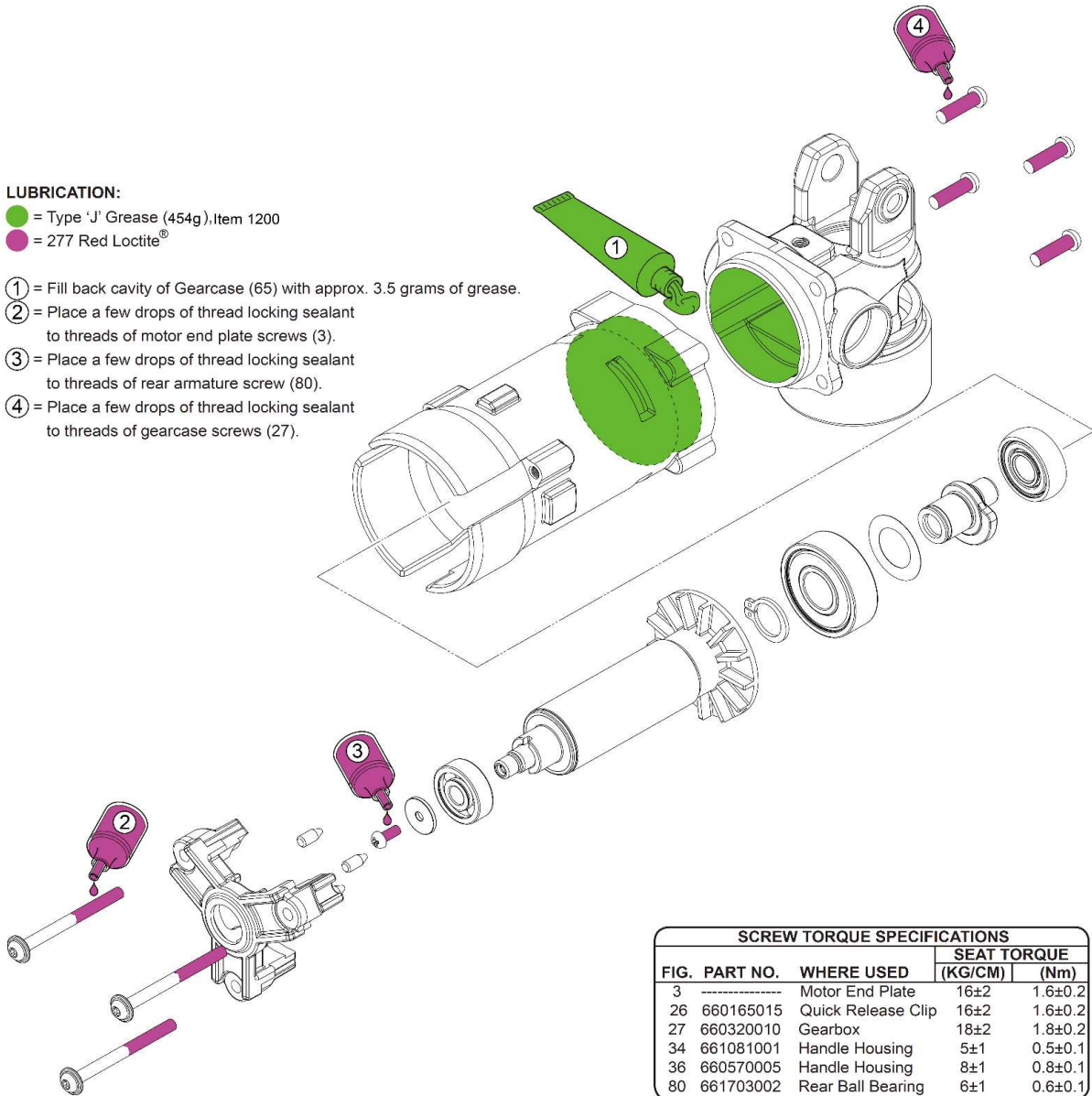


FIG.	PART NO.	WHERE USED	SEAT TORQUE	
			(KG/CM)	(Nm)
3	-----	Motor End Plate	16±2	1.6±0.2
26	660165015	Quick Release Clip	16±2	1.6±0.2
27	660320010	Gearbox	18±2	1.8±0.2
34	661081001	Handle Housing	5±1	0.5±0.1
36	660570005	Handle Housing	8±1	0.8±0.1
80	661703002	Rear Ball Bearing	6±1	0.6±0.1



M12 FMT

SERVICE INSTRUCTION

TTI Model Number: 018 401 008

M12 FUEL™ MULTI TOOL

Bulletin Date:

Dec-20

Starting Serial Number:

VERSION A -

AS AN AID TO REASSEMBLY, TAKE NOTICE OF WIRE ROUTING AND POSITION IN WIRE GUIDES AND TRAPS WHILE DISMANTLING TOOL.

BE SURE THAT ALL COMPONENTS OF THE ELECTRONICS KIT ARE SEATED FIRMLY AND SQUARELY IN THE HANDLE RECESSES.

AVOID PINCHED WIRES, BE SURE THAT ALL WIRES AND SLEEVES ARE PRESSED COMPLETELY DOWN IN WIRE GUIDES AND TRAPS.

PRIOR TO SECURING THE HANDLE COVER ONTO THE HANDLE SUPPORT, BE SURE THAT THERE ARE NO INTERFERENCES.

BEFORE INSTALLING THE BATTERY, CHECK FOR PROPER FUNCTIONALITY OF SHUTTLE AND TRIGGERS.

INSTALL BATTERY AND DEPRESS SWITCH TRIGGER TO ASSURE TOOL IS OPERATING PROPERLY.

